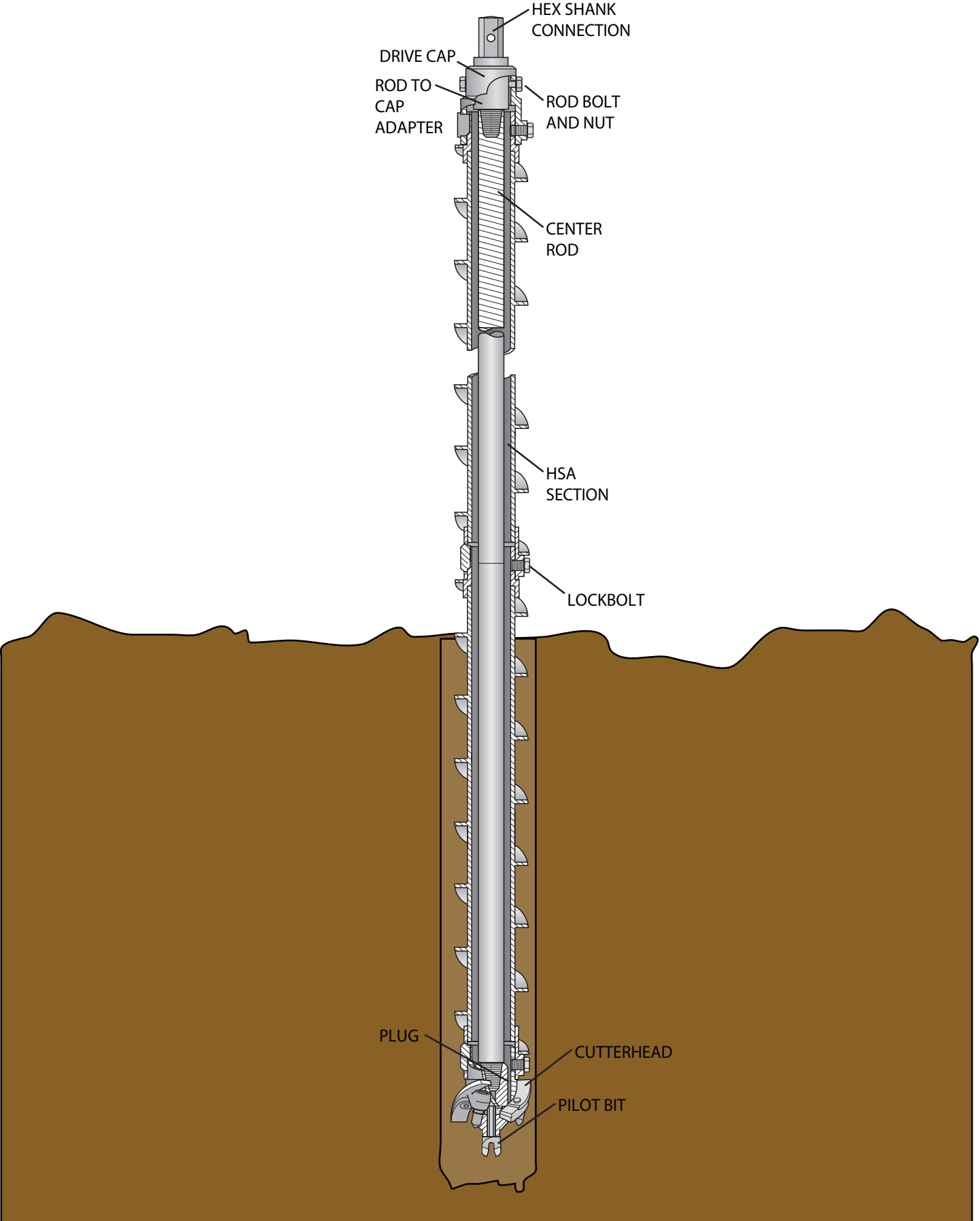


# Hollow Stem Augers & Cutterheads



# Hollow Stem Augers

## 3-1/4 (83mm) 3-KEY AUGER

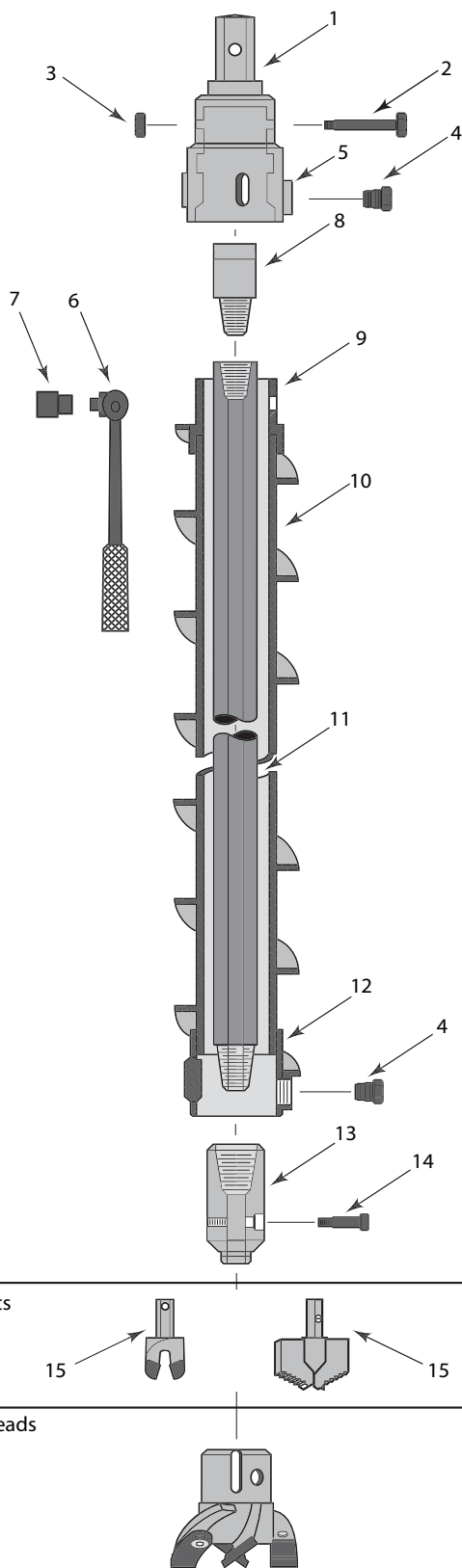
Now with thicker flight and heat-treated pins for extended life. Predominately used for geotechnical applications such as split spoon sampling. Sizes are identified by hollow stem auger I.D.

Meter length available.

## 6-1/2" (165mm) O.D

### Component Parts

Ref	Description	Part No.	Lb/Kg
1	Drive Cap: 1-1/8. (29mm) Hex	150429	
1	Drive Cap: 1-5/8. (41mm) Hex	150292	17 (7.7)
1	Drive Cap: 2. (51mm) Hex	150322	22 (10)
2	Rod Bolt	3100-0184	
3	Hex Nut	3122-0012	
4	<b>Lockbolt - 1</b>	<b>217136-I</b>	
4	<b>Lockbolt - 1 Req'd (Hard Faced)</b>	<b>150307-I</b>	
5	Bushing, Field Replaceable	150308-I	
5	Bushing, Replaceable	150300-I	
6	Handle	3781-0009	
7	Socket	3782-0016	
8	Adapter: AW Rod to Drive Cap	150310	5 (2.3)
8	Adapter: AWJ Rod to Drive Cap	150311	5 (2.3)
8	Adapter: NW Rod to Drive Cap	180049-03	11 (5)
8	Adapter: NWJ Rod to Drive Cap	180054-04	11 (5)
9	Coupling Pin, Heat-Treated (Repair Only)	150296	6 (2.7)
10	<b>Auger Section - 3'0. (.91m)</b>	<b>150288-02</b>	<b>38 (17.2)</b>
10	<b>Auger Section - 5'0. (1.5m)</b>	<b>150288</b>	<b>69 (31.3)</b>
10	Auger Section - 5'0. (1.5m), Heavy Duty	150288-01	.85 (38.6)
11	Center Rod - 5'0. (1.5m), AW	001605	22 (10.0)
11	Center Rod - 5'0. (1.5m), AWJ	006276	15 (6.8)
11	Center Rod - 5'0. (1.5m), NW	001608	32 (14.5)
11	Center Rod - 5'0. (1.5m), NWJ	006278	35 (15.9)
12	Box Coupling (Repair Only)	150295	6 (2.7)
13	Plug - 1-1/8. (29mm) Hex to AW Box	150312	12 (5.4)
13	Plug - 1-1/8. (29mm) Hex to AWJ Box	150379	12 (5.4)
13	Plug - 1-1/8. (29mm) Hex to NW Box	150306	11 (5)
13	Plug - 1-1/8. (29mm) Hex to NWJ Box	150377	11 (5)
14	Plug Bolt	3130-0098	
15	Pilot Bit, 2-Prong, 1-1/8. (29mm) Hex	200024	.2 (.9)
15	Pilot Bit, 3-Wing, 1-1/8. (29mm) Hex	150574-01	
	Repair Key	150576-I	
	Clean Out Tap (For Bushing)	150562	
	O-Ring	3538-0238	



Pilot Bits

Cutterheads

# Hollow Stem Augers

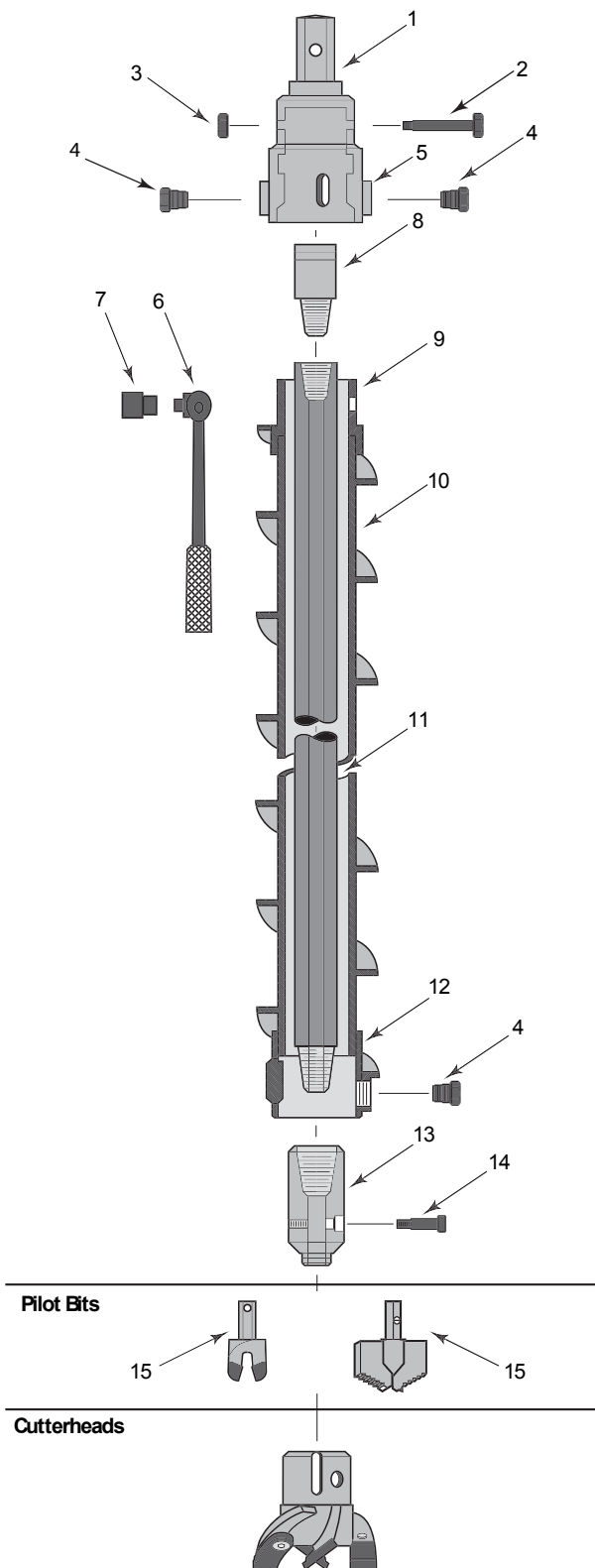
## 4-1/4 (108mm) 3-KEY AUGER

Now with thicker flight and heat-treated pins for extended life. Predominately used for geotechnical applications such as split spoon sampling. Sizes are identified by hollow stem auger I.D.

Meter length available.

## 7-5/8" (194mm) O.D

### Component Parts



Ref	Description	Part No.	lb./kg.
1	Drive Cap, 1-5/8" (41mm) Hex	150482	24 (10.9)
1	Drive Cap, 2" (51mm) Hex	150490	28 (12.7)
2	Rod Bolt	3100-0279	
3	Hex Nut	3122-0012	
4	<b>Lockbolt - 2 Req'd</b>	<b>217136-I</b>	
4	<b>Lockbolt - 2 Req'd (Hard Faced)</b>	<b>150307-I</b>	
5	Repair Bushing	150477-1	
6	Handle	3781-0009	
7	Socket	3782-0016	
8	Adapter: AW Rod to Drive Cap	150310	5 (2.3)
8	Adapter: AWJ Rod to Drive Cap	150311	5 (2.3)
8	Adapter: NW Rod to Drive Cap	180049-03	11 (5)
8	Adapter: NWJ Rod to Drive Cap	180054-04	5 (2.3)
9	Pin Coupling, Heat-treated (Repair Only)	150474	9 (4.1)
10	Auger Section: 3'0" (.91m).....	150473-02	45 (20.4)
10	<b>Auger Section: 5'0" (1.5m),</b>	<b>150473</b>	<b>90 (40.8)</b>
10	Auger Section: 5'0" (1.5m), Heavy Duty	150473-01	110 (49.9)
11	Center Rod: 5'0" (1.5m), AW	001605	22 (10)
11	Center Rod: 5'0" (1.5m), AWJ	006276	15 (6.8)
11	Center Rod: 5'0" (1.5m), NW	001608	32 (14.5)
11	Center Rod: 5'0" (1.5m), NWJ	006278	35 (15.9)
12	Box Coupling (Repair Only)	150475	9 (4.1)
13	Plug: 1-1/8" (29mm) Hex to AW Box	150492	19 (8.6)
13	Plug: 1-1/8" (29mm) Hex to AWJ Box	150494	19 (8.6)
13	Plug: 1-1/8" (29mm) Hex to NW Box	150488	18 (8.2)
13	Plug: 1-1/8" (29mm) Hex to NWJ Box	150486	18 (8.2)
14	Plug Bolt	3130-0118	
15	Pilot Bit, 1-1/8" (29mm) Hex, 2-Prong	004304	2 (.9)
15	Pilot Bit, 1-1/8" (29mm) Hex, 3-Wing	150574-02	4 (1.8)
	Repair Key	150577-1	
	Clean Out Tap (for Lockbolt Hole)	150562	
	O-Ring	3538-0246	

# Hollow Stem Augers

## 6-5/8 (168mm) 3-KEY AUGER

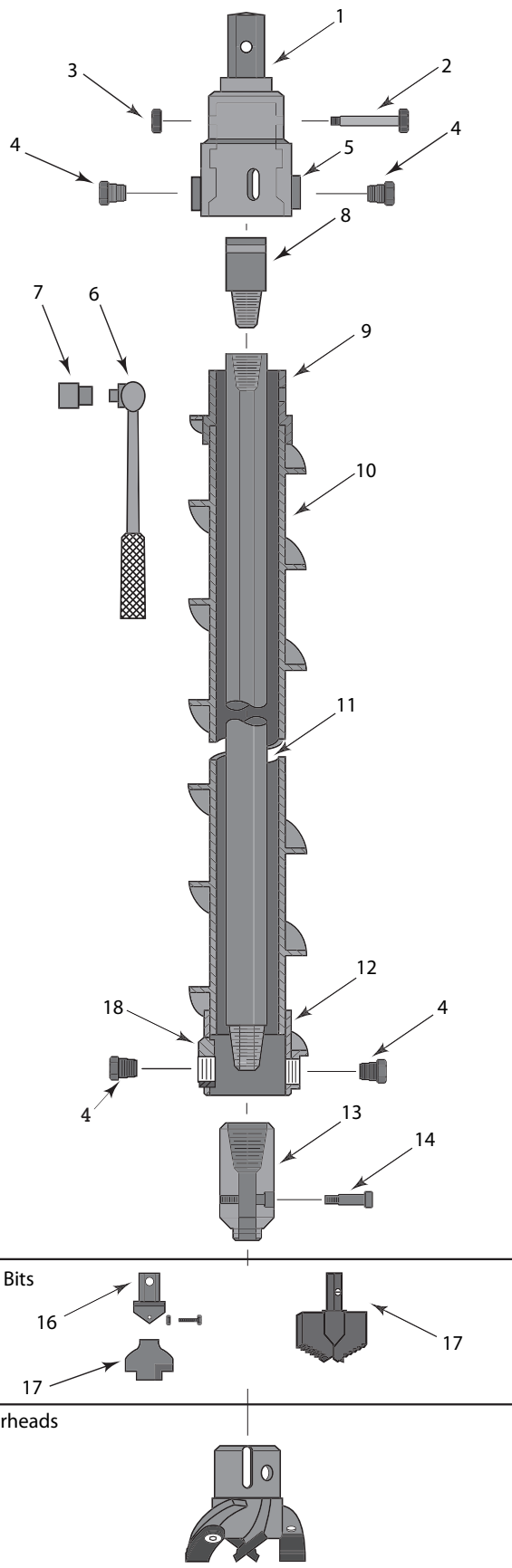
Thicker flight and heat-treated pins for extended life.

Sizes are identified by hollow stem auger I.D.

Meter length available.

### 10" (254mm) O.D

### Component Parts



Ref	Description	Part No.	lb./kg.
1	Drive Cap, 1-5/8" (41mm) Hex	150394	46 (20.9)
1	Drive Cap, 2" (51mm) Hex	150401	49 (22.2)
2	Rod Bolt	3100-0280	
3	Hex Nut	3122-0012	
4	Lockbolt - 2 Req'd	217136-I	
4	Lockbolt - 2 Req'd (Hard Faced)	150307-I	
5	Repair Bushing	150477	
6	Handle	3781-0009	
7	Socket	3782-0016	
8	Adapter: NW Rod to Drive Cap	180049-03	11 (5)
8	Adapter: NWJ Rod to Drive Cap	180054-04	5 (2.3)
9	Pin Coupling, Heat-treated (Repair Only)	150388	15 (6.8)
10	Auger Section: 5'0" (1.5m),	150392	105 (47.6)
11	Center Rod: 5'0" (1.5m), NW	001608	32 (14.5)
11	Center Rod: 5'0" (1.5m), NWJ	006278	35 (15.9)
12	Box Coupling (Repair Only)	150391	15 (6.8)
13	Plug: 1-5/8" (41mm) Hex to NW Box	180036-15	50 (22.7)
13	Plug: 1-5/8" (41mm) Hex to NWJ Box	180036-14	50 (22.7)
14	Plug Bolt	3130-0170	
16	Pilot Bit Shank, 1-5/8" (41mm) Hex	LHX141L-I	3 (1.4)
17	Pilot Bit	004950	11 (5)
17	Pilot Bit, 1-5/8" (41mm) Hex, 3-Wing	150574-03	
18	Repair Key	150578-I	
	Clean Out Tap (For Lockbolt Hole)	150562	
	O-Ring	3538-0262	

# Hollow Stem Augers

## 8-1/4" (210mm) 3-KEY AUGER

Thicker flight and heat-treated pins for extended life.

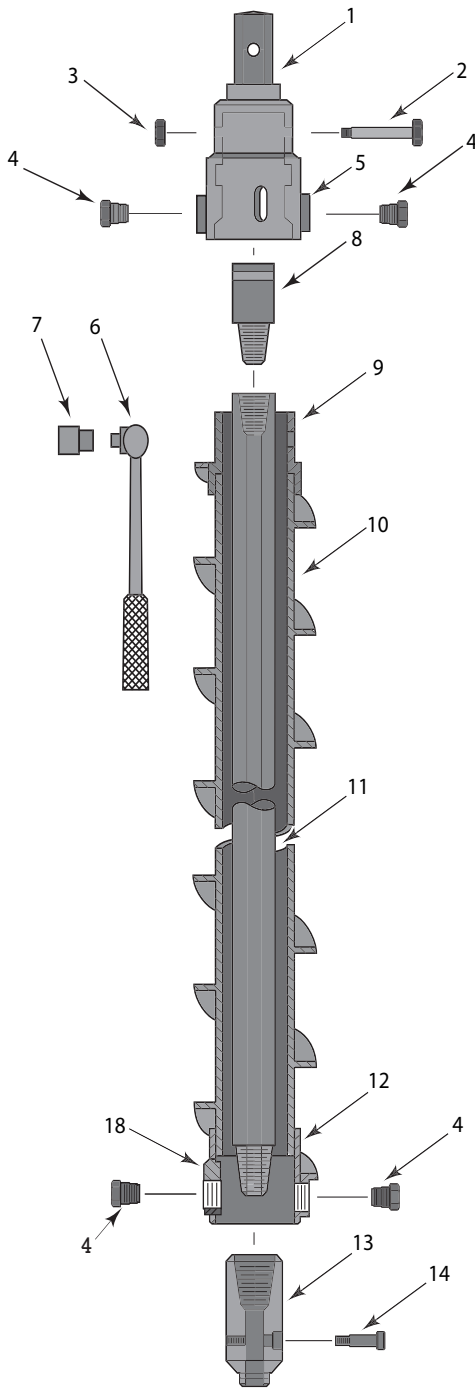
Sizes are identified by hollow stem auger I.D.

Meter length available.

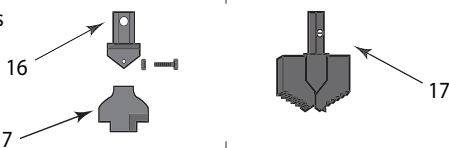
## 12" (305mm) O.D

### Component Parts

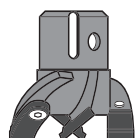
Ref	Description	Part No.	lb./kg.
1	Drive Cap, 2" (51mm) Hex	150534	57 (25.9)
2	Rod Bolt	3100-0289	
3	Hex Nut	3122-0012	
4	Lockbolt - 2 Req'd	217136-I	
4	Lockbolt - 2 Req'd (Hard Faced)	150307-I	
5	Repair Bushing	150477-1	
6	Handle	3781-0009	
7	Socket	3782-0016	
8	Adapter: NW Rod to Drive Cap	180049-03	11 (5)
8	Adapter: NWJ Rod to Drive Cap	180054-04	5 (2.3)
9	Pin Coupling, Heat-treated (Repair Only)	150525	18 (8.2)
10	Auger Section: 5'0" (1.5m),	150531	144 (63.3)
11	Center Rod: 5'0" (1.5m), NW	001608	32 (14.5)
11	Center Rod: 5'0" (1.5m), NWJ	006278	35 (15.9)
12	Box Coupling (Repair Only)	150529	18 (8.2)
13	Plug: 1-5/8" (41mm) Hex to NW Box	180036-19	34 (15.4)
13	Plug: 1-5/8" (41mm) Hex to NWJ Box	180036-20	34 (15.4)
14	Plug Bolt	3130-0191	
16	Pilot Bit Shank, 1-5/8" (41mm) Hex	LHX141L-I	3 (1.4)
17	Pilot Bit	007188	8 (3.6)
17	Pilot Bit, 1-5/8" (41mm) Hex, 3-Wing	150574-04	
18	Repair Key	150579-I	
	Clean Out Tap (For Lockbolt Hole)	150562	
	O-Ring	3538-0263	



Pilot Bits



Cutterheads



# Hollow Stem Augers

## 10-1/4 (260mm) 3-KEY AUGER

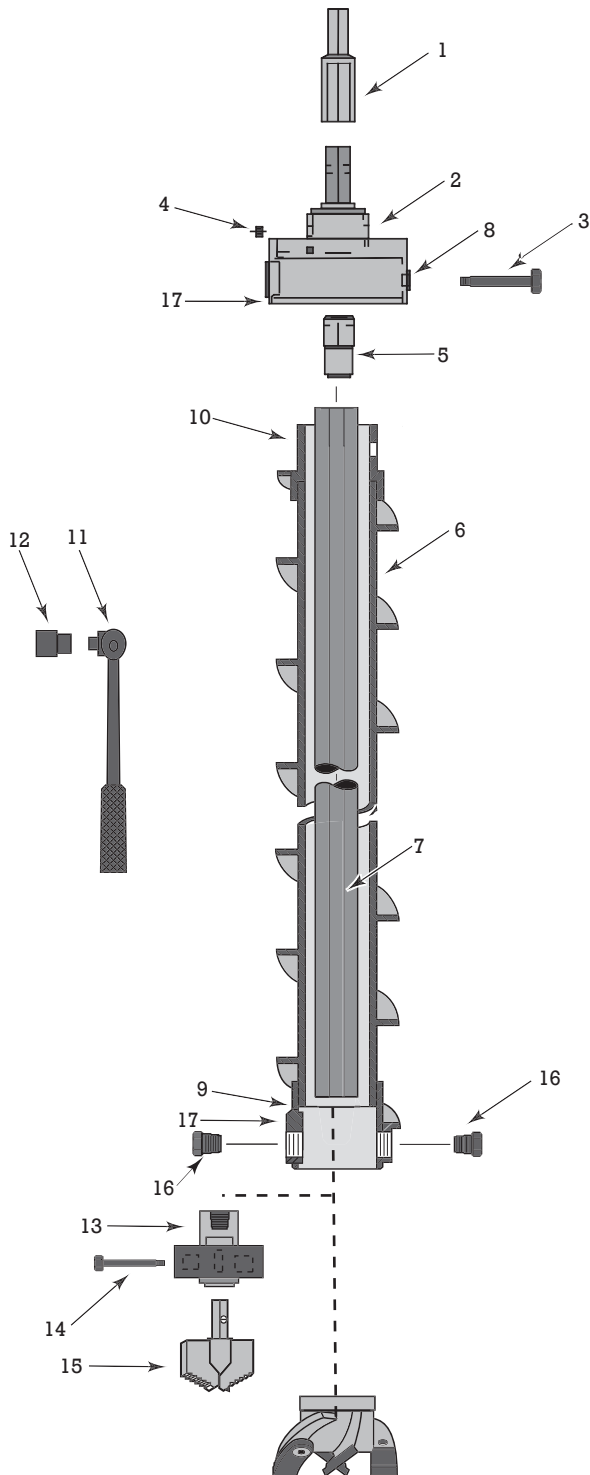
Thicker flight and heat-treated pins for extended life.

Sizes are identified by hollow stem auger I.D.

Meter length available.

### 14-1/4" (362mm) O.D

### Component Parts



Ref	Description	Part No.	lb./kg.
1	Adapter, Auger, 1-5/8" (41mm) Hex to 2" (51mm) Hex Socket	004643	11 (5.0)
2	Drive Cap, 2" (51mm) Hex	150618	70 (31.8)
3	Rod Bolt	3100-0279	*
4	Hex Nut	3122-0012	*
5	Adapter: NW Rod to Drive Cap	180049-03	5 (2.3)
5	Adapter: NWJ Rod to Drive Cap	180054-04	5 (2.3)
6	<b>Auger Section: 5'0" (1.5m),</b>	<b>150543-02</b>	<b>256 (116.1)</b>
7	Center Rod: 5'0" (1.5m), NW	001608	32 (14.5)
7	Center Rod: 5'0" (1.5m), NWJ	006278	35 (15.9)
8	Repair Bushing	150665	*
9	Repair Box	150610	35 (15.9)
10	Repair Pin	150611	28 (12.7)
11	Handle	3781-0010	*
12	Socket	3818-0020	*
13	NW Rod Box Center Plug	180036-27	93 (42.2)
13	NWJ Rod Box Center Plug	180036-25	92 (41.7)
14	Bolt	3130-0163	*
15	3-Wing Pilot Bit	150574-05	24 (10.9)
16	Lock Bolt - 2 Req'd	150666-I	*
16	Lock Bolt - 2 Req'd Hard Faced	150666-01-I	*
17	Repair Key	150614	*
	Plain Lock Bolt	150666-01	

# Hollow Stem Augers

## 12-1/4" (311mm) 3-KEY AUGER

Thicker flight and heat-treated pins for extended life.

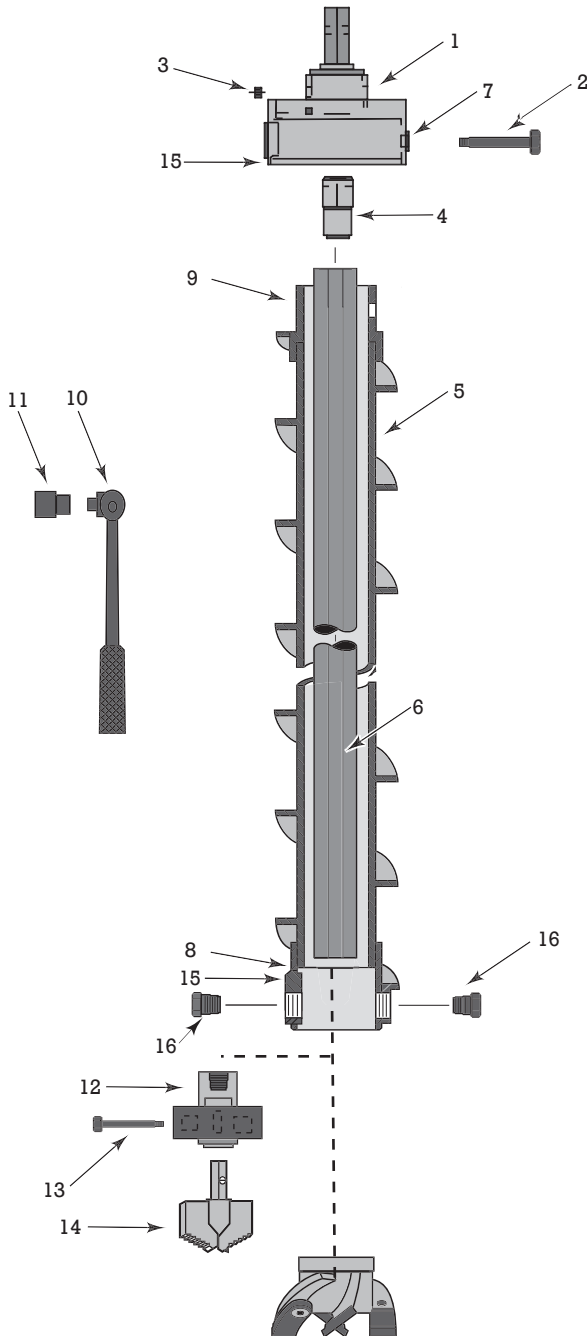
Sizes are identified by hollow stem auger I.D.

Meter length available.

### 17" (432mm) O.D

### Component Parts

Ref	Description	Part No.	lb./kg.
1	Drive Cap, 2" (51mm) Hex	150643	70 (31.8)
2	Rod Bolt	3100-0242	*
3	Hex Nut	3122-0012	*
4	Adapter: NWJ Rod to Drive Cap	180054-04	5 (2.3)
5	<b>Auger Section: 5'0" (1.5m),</b>	<b>150572-02</b>	<b>256 (116.1)</b>
6	Center Rod: 5'0" (1.5m), NWJ	006278	35 (15.9)
7	Repair Bushing	150665-1	*
8	Repair Box	150639	35 (15.9)
9	Repair Pin	150640	28 (12.7)
10	Handle	3781-0010	*
11	Socket	3818-0020	*
12	NWJ Rod Box Center Plug	180036-25	92 (41.7)
13	Bolt	3130-0163	*
14	3-Wing Pilot Bit	150574-05	24 (10.9)
15	Repair Key	150642	*
16	<b>Lock Bolt - 2 Req'd</b>	<b>150666</b>	<b>*</b>
16	<b>Lock Bolt - 2 Req'd Hard Faced</b>	<b>150666-01-1</b>	<b>*</b>
	Hard Faced Lock Bolt	150666-01	



# Hollow Stem Augers

## 2-1/4" (57mm) LIGHT-FLIGHT AUGER

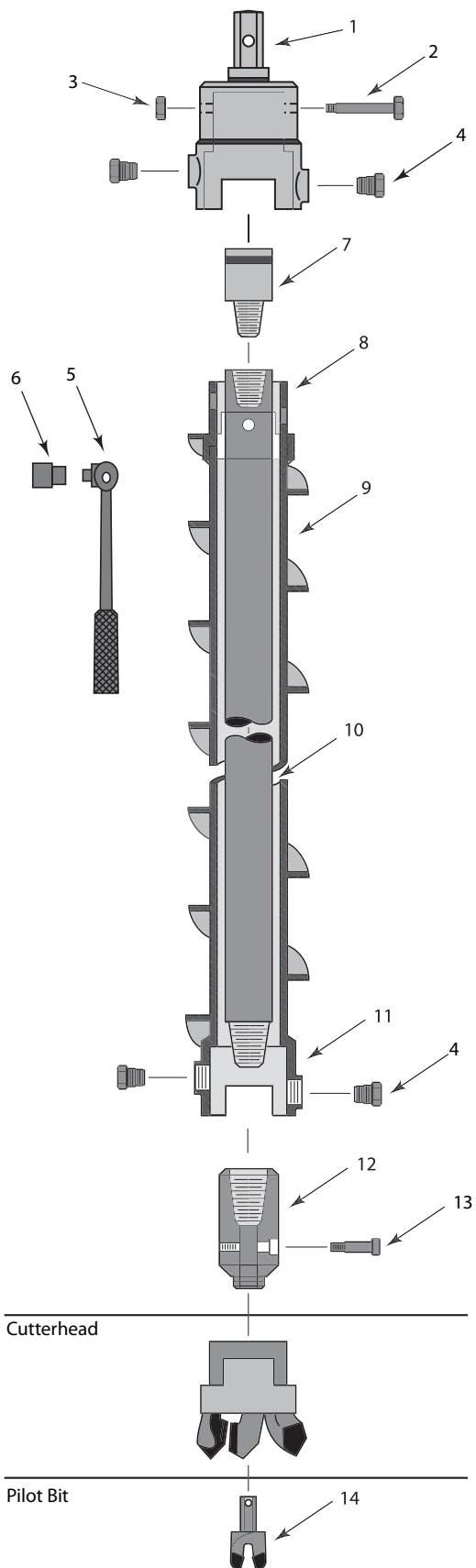
### 2-1/4" (57mm) LIGHT-FLIGHT AUGER

LIGHT-FLITE augers are designed to fill the need for a lightweight, hollow stem auger for use with lightweight drilling rigs having a maximum torque output of not more than 3750 ft-lbs. For stronger machines, use standard duty 2-1/4" I.D. 2-key HSA. LIGHT-FLIGHT's 2-1/4" (57mm) I.D. will allow standard penetration testing with 2" (51mm) tools and equipment to a maximum of 22.5' (6.8m). Sizes are identified by hollow stem auger I.D.

## 4-3/8" (111mm) O.D

### Component Parts

Ref	Description	Part No.	lb./kg.
1	Drive Cap 13/16" (21mm) Hex	150404	6 (2.7)
1	Drive Cap 1-1/8" (29mm) Hex	150399	6 (2.7)
2	Rod Bolt	3100-0128	
3	Hex Nut	3122-0012	
4	<b>Lock Bolt Without Hard Facing</b>	<b>217135</b>	
4	<b>Lock Bolt With Hard Facing</b>	<b>150383</b>	
5	Handle, 1/2" (13mm) Sq Drive Flex x 1'6" (457mm)	3781-0009	3 (1.4)
6	Socket, 15/16" (24mm) Hex	3782-0013	
7	Adapter: EW Rod to Drive Cap	150402	1 (.5)
7	Adapter: AW Rod to Drive Cap	150310	2 (.9)
7	Adapter: AWJ Rod to Drive Cap	150311	2 (.9)
8	Pin Coupling (Repair Only)	150384	3 (1.4)
9	<b>Auger Section: 2'6" (762mm)</b>	<b>150414</b>	<b>17 (7.7)</b>
10	Center Rod: 2'6" (762mm), AWJ	150416	7 (3.2)
10	Center Rod: 2'6" (762mm), EW	001753	7 (3.2)
11	Box Coupling (Repair Only)	150385	3 (1.4)
12	Plug: 13/16" (21mm) Hex Socket to EW Box	180448-01	4 (1.8)
12	Plug: 13/16" (21mm) Hex Socket to AW Box	180448-02	4 (1.8)
12	Plug: 13/16" (21mm) Hex Socket to AWJ Box	180448-03	4 (1.8)
13	Pilot Bit	3130-0062	
14	Pilot Bit, 13/16" (21mm) Hex	004981	1 (.5)
	Light Flight Cutterhead	150397	3 (1.4)





# Hollow Stem Augers

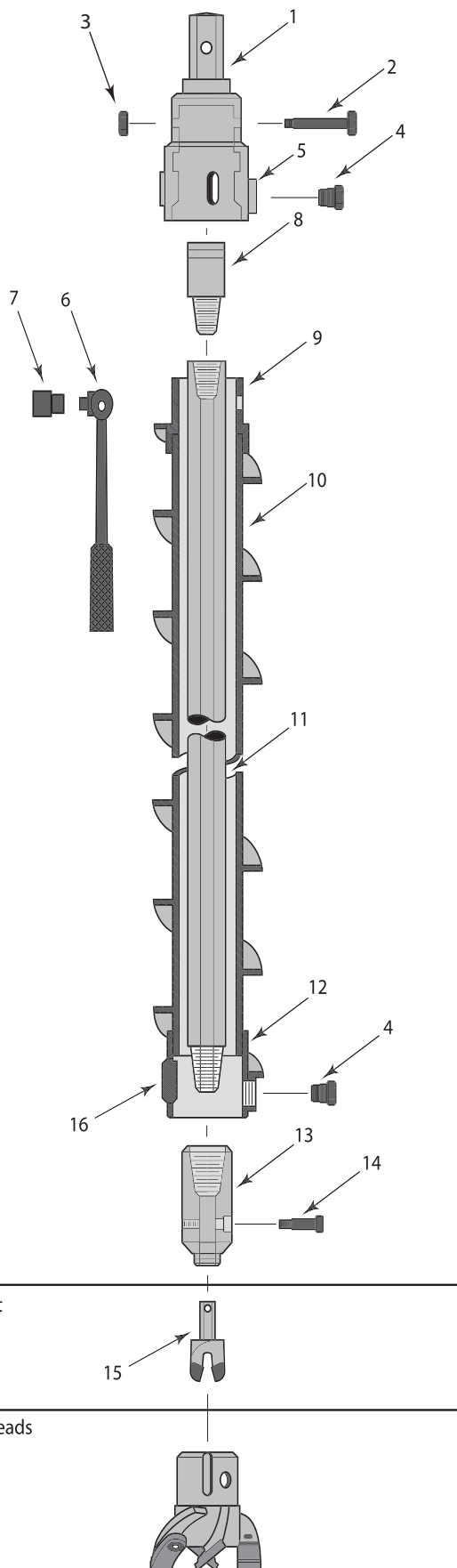
## 2-1/4" (57mm) 2-KEY STANDARD DUTY AUGER

Sizes are identified by hollow stem auger I.D.  
Meter length available.

### 5-5/8" (143mm) O.D

### Component Parts

Ref	Description	Part No.
1	Drive Cap, 1-1/8" (29mm) Hex	150717
1	Drive Cap, 1-5/8" (41mm) Hex	21001
2	Rod to Cap Adapter Bolt	3100-0184
3	Rod to Cap Adapter Nut	3122-0012
4	<b>Lockbolt</b>	<b>21025-I</b>
4	<b>Lockbolt Hardfaced</b>	<b>21025HF-I</b>
5	Bushing	21068-I
6	Auger Wrench Handle	3781-0009
7	Auger Wrench Socket	3782-0016
8	Rod to Cap Adapter AW	21013
8	Rod to Cap Adapter AWJ	21014
9	Pin Coupling, Heat-treated (Repair Only)	21062
10	<b>Auger Section: 5'0" (1.5m),</b>	<b>21007</b>
10	<b>Auger Section: 5'0" (1.5m), Heavy Duty</b>	<b>21007HD</b>
11	Center Rod: 5'0" (1.5m), AW	001605
11	Center Rod: 5'0" (1.5m), AWJ	006276
12	Box Coupling (Repair Only)	21065
13	Center Plug AW Connection	180448-02
13	Center Plug AWJ Connection	180448-03
14	Center Plug Bolt/Pin	3130-0062
15	Pilot Bit	004981
16	Repair Key	21067
	O-Ring	21024
	Insert Clean Out Tap	21042
	Auger Hoisting Hook	21041



Pilot Bit

15

Cutterheads

# Hollow Stem Augers

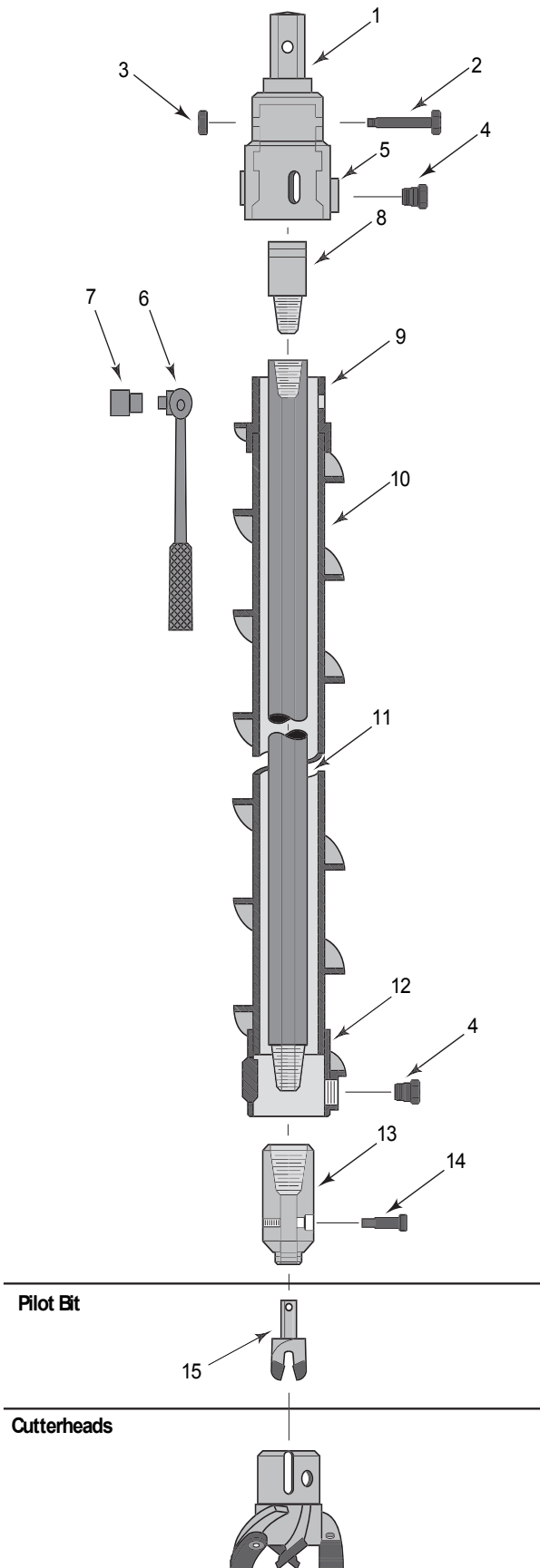
## 3-1/4" (83mm) 2-KEY STANDARD DUTY AUGER

Sizes are identified by hollow stem auger I.D.  
Also available in 2-key heavy-duty and 3-KEY.

### 6-1/2" (165mm) O.D

### Component Parts

Ref	Description	Part No.	lb./kg.
1	Drive Cap, 1-5/8" (41mm) Hex	21263	17 (7.7)
1	Drive Cap, 2" (51mm) Hex	150732	22 (10)
2	Drive Cap Bolt	3100-0184	
3	Drive Cap Nut	3122-0012	
4	<b>Lockbolt - 1 Req'd</b>	<b>21025-I</b>	
4	<b>Lockbolt - 1 Req'd (Hard Faced)</b>	<b>21025HF-I</b>	
5	Bushing	21068-I	
6	Handle	3781-0009	
7	Socket	3782-0016	
8	Adapter: AW Rod to Drive Cap	21197	5 (2.3)
8	Adapter: AWJ Rod to Drive Cap	21198	5 (2.3)
8	Adapter: NW Rod to Drive Cap	21203	11 (5)
8	Adapter: NWJ Rod to Drive Cap	21204	11 (5)
9	Pin Coupling, Heat-treated (Repair Only)	21259	6 (2.7)
10	<b>Auger Section: 5'0" (1.5m),</b>	<b>21191</b>	<b>69 (31.3)</b>
11	Center Rod: 5'0" (1.5m), AW	001605	22 (10.0)
11	Center Rod: 5'0" (1.5m), AWJ	006276	15 (6.8)
11	Center Rod: 5'0" (1.5m), NW	001608	32 (14.5)
11	Center Rod: 5'0" (1.5m), NWJ	006278	35 (15.9)
12	Box Coupling (Repair Only)	21262	6 (2.7)
13	Plug - 1-1/8" (29mm) Hex to AW Box	150312	12 (5.4)
13	Plug - 1-1/8" (29mm) Hex to AWJ Box	150379	12 (5.4)
13	Plug - 1-1/8" (29mm) Hex to NW Box	150306	11 (5)
13	Plug - 1-1/8" (29mm) Hex to NWJ Box	150377	11 (5)
14	Plug Bolt	3130-0098	
15	Pilot Bit, 2-Prong, 1-1/8" (29mm) Hex	200024	2 (.9)
15	Pilot Bit, 3-Wing, 1-1/8" (29mm) Hex	150574-01	
	Repair Key	21067	
	Clean Out Tap (For Bushing)	21042	
	Auger Hoisting Hook	21041	
	O-Ring	21216	



# Hollow Stem Augers

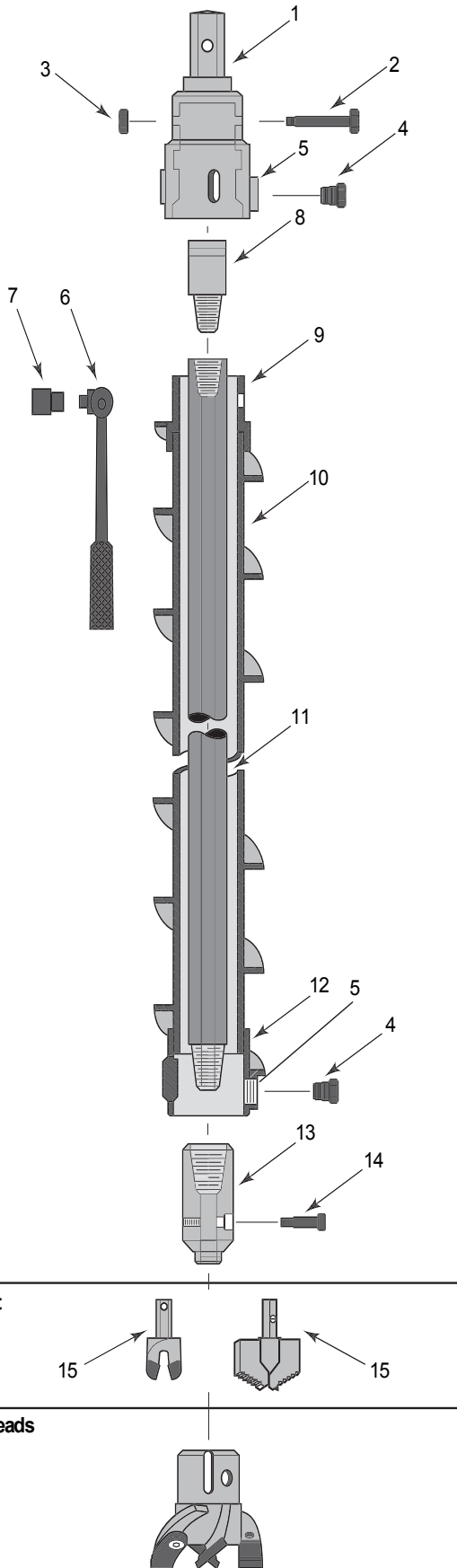
## 3-1/4" (83mm) 2-KEY HEAVY DUTY AUGER

Sizes are identified by hollow stem auger I.D.  
Meter length available.

## 6-1/2" (165mm) O.D

### Component Parts

Ref	Description	Part No.	lb./kg.
1	Drive Cap, 1 5/8" (41mm) Hex	21900	
1	Drive Cap, 2" (51mm) Hex	150646	22 (10)
2	Rod Bolt	3100-0184	
3	Hex Nut	3122-0012	
4	<b>Lockbolt - 1 Req'd</b>	<b>21913-I</b>	
4	<b>Hard Faced Lockbolt - 1 Req'd</b>	<b>21915HF-I</b>	
5	Bushing	21915-1	
6	Handle	3781-0010	
7	Socket	3782-0017	
8	Adapter: AW Rod to Drive Cap	21197	5 (2.3)
8	Adapter: AWJ Rod to Drive Cap	21198	5 (2.3)
8	Adapter: NW Rod to Drive Cap	21203	11 (5)
8	Adapter: NWJ Rod to Drive Cap	21204	11 (5)
9	Pin Coupling (Repair Only)	21929	6 (2.7)
10	<b>Auger Section: 5'0" (1.5m),</b>	<b>21908</b>	<b>69 (31.3)</b>
11	Center Rod: 5'0" (1.5m), AW	001605	22 (10.0)
11	Center Rod: 5'0" (1.5m), AWJ	006276	15 (6.8)
11	Center Rod: 5'0" (1.5m), NW	001608	32 (14.5)
11	Center Rod: 5'0" (1.5m), NWJ	006278	35 (15.9)
12	Box Coupling (Repair Only)	21928	6 (2.7)
13	Plug - 1-1/8" (29mm) Hex to AW Box	150312	12 (5.4)
13	Plug - 1-1/8" (29mm) Hex to AWJ Box	150379	12 (5.4)
13	Plug - 1-1/8" (29mm) Hex to NW Box	150306	11 (5)
13	Plug - 1-1/8" (29mm) Hex to NWJ Box	150377	11 (5)
14	Plug Bolt	3130-0098	
15	Pilot Bit, 2-Prong, 1-1/8" (29mm) Hex	200024	2 (.9)
15	Pilot Bit, 3-Wing, 1-1/8" (29mm) Hex	150574-01	
	Repair Key	21917	
	Clean Out Tap	21916	
	O-Ring	21912	
	Auger Hook	21041	



Pilot Bit

15

Cutterheads

# Hollow Stem Augers

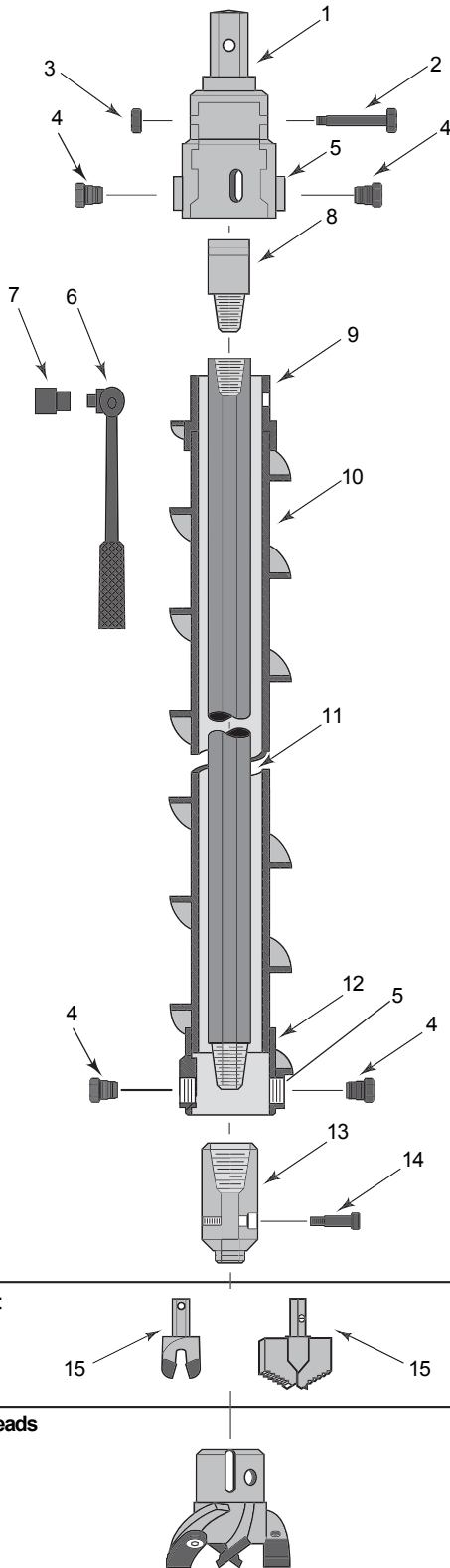
## 4-1/4" (108mm) 2-KEY STANDARD AUGER

Sizes are identified by hollow stem auger I.D.

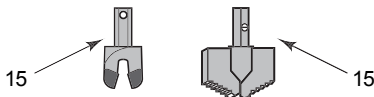
## 8-1/4" (210mm) O.D

### Component Parts

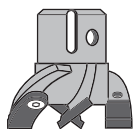
Ref	Description	Part No.	lb./kg.
1	Drive Cap, 1 5/8" (41mm) Hex Shank	21469	
2	Rod Bolt	3100-0279	
3	Hex Nut	3122-0012	
4	<b>Lockbolt - 2 Req'd (Repair Only)</b>	<b>21025-1</b>	
4	<b>Hard Faced Lockbolt - 2 Req'd</b>	<b>21025HF-1</b>	
5	Repair Bushing	21068-1	
6	Handle	3781-0009	
7	Socket	3782-0016	
8	Adapter: AW Rod Pin to Drive Cap	21418	5 (2.3)
8	Adapter: AWJ Rod Pin to Drive Cap	21482	5 (2.3)
8	Adapter: NW Rod Pin to Drive Cap	21487	11 (5)
8	Adapter: NWJ Rod Pin to Drive Cap	21488	11 (5)
9	Pin Coupling (Repair Only)	21543	6 (2.7)
10	<b>Auger Section: 5'0" (1.5m),</b>	<b>21475</b>	<b>69 (31.3)</b>
11	Center Rod: 5'0" (1.5m), AW	001605	22 (10.0)
11	Center Rod: 5'0" (1.5m), AWJ	006276	15 (6.8)
11	Center Rod: 5'0" (1.5m), NW	001608	32 (14.5)
11	Center Rod: 5'0" (1.5m), NWJ	006278	35 (15.9)
12	Box Coupling (Repair Only)	21546	9 (4.1)
13	Plug - 1-1/8" (29mm) Hex to AW Box	150492	19 (8.6)
13	Plug - 1-1/8" (29mm) Hex to AWJ Box	150494	19 (8.6)
13	Plug - 1-1/8" (29mm) Hex to NW Box	150488	18 (8.2)
13	Plug - 1-1/8" (29mm) Hex to NWJ Box	150486	18 (8.2)
14	Plug Bolt	3130-0118	
15	Pilot Bit, 2-Prong, 1-1/8" (29mm) Hex	004304	2 (.9)
15	Pilot Bit, 3-Wing, 1-1/8" (29mm) Hex	150574-02	4 (1.8)
	Repair Key	21067	
	Clean Out Tap	21042	
	Auger Seal / O-Ring	21988	
	Auger Hoisting Hook	21041	



Pilot Bit



Cutterheads



# Hollow Stem Augers

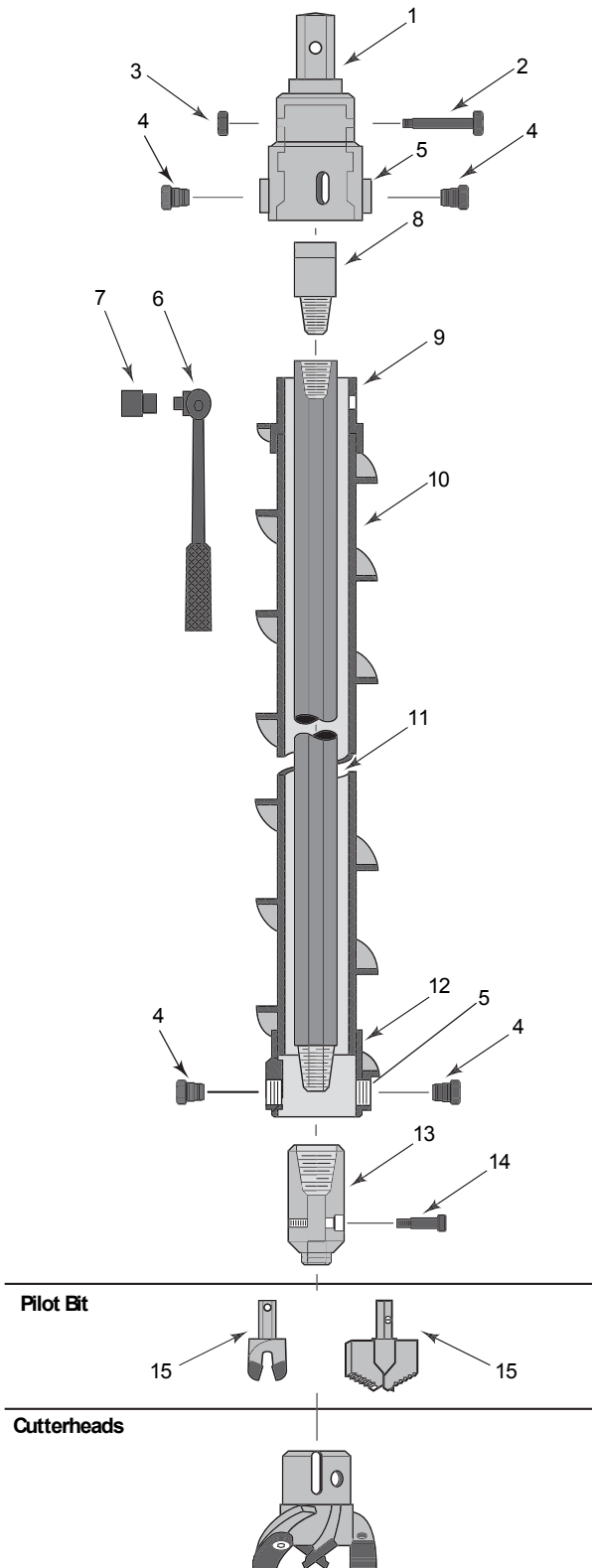
## 4-1/4" (108mm) 2-KEY HEAVY DUTY AUGER

Sizes are identified by hollow stem auger I.D.

## 8-1/4" (210mm) O.D.

### Component Parts

Ref	Description	Part No.	lb./kg.
1	Drive Cap, 1 5/8" (41mm) Hex Shank	22047	
1	Drive Cap, 2" (51mm) Hex Shank	22049	28 (12.7)
2	Rod Bolt	3100-0279	
3	Hex Nut	3122-0012	
4	<b>Lockbolt - 2 Req'd (Repair Only)</b>	<b>21913-I</b>	
4	<b>Hard Faced Lockbolt - 2 Req'd</b>	<b>21913HF-I</b>	
5	Repair Bushing	21915-1	
6	Handle	3781-0009	
7	Socket	3782-0016	
8	Adapter: AW Rod Pin to Drive Cap	21481	5 (2.3)
8	Adapter: AWJ Rod Pin to Drive Cap	21482	5 (2.3)
8	Adapter: NW Rod Pin to Drive Cap	21487	11 (5)
8	Adapter: NWJ Rod Pin to Drive Cap	21488	11 (5)
9	Pin Coupling (Repair Only)	22071	6 (2.7)
10	<b>Auger Section: 5'0" (1.5m),</b>	<b>22055</b>	<b>69 (31.3)</b>
11	Center Rod: 5'0" (1.5m), AW	001605	22 (10.0)
11	Center Rod: 5'0" (1.5m), AWJ	006276	15 (6.8)
11	Center Rod: 5'0" (1.5m), NW	001608	32 (14.5)
11	Center Rod: 5'0" (1.5m), NWJ	006278	35 (15.9)
12	Box Coupling (Repair Only)	22070	9 (4.1)
13	Plug - 1-1/8" (29mm) Hex to AW Box	150492	19 (8.6)
13	Plug - 1-1/8" (29mm) Hex to AWJ Box	150494	19 (8.6)
13	Plug - 1-1/8" (29mm) Hex to NW Box	150488	18 (8.2)
13	Plug - 1-1/8" (29mm) Hex to NWJ Box	150486	18 (8.2)
14	Plug Bolt	3130-0118	
15	Pilot Bit, 2-Prong, 1-1/8" (29mm) Hex	004304	2 (.9)
15	Pilot Bit, 3-Wing, 1-1/8" (29mm) Hex	150574-02	4 (1.8)
	Repair Key	21917	
	Clean Out Tap	21916	
	Auger Seal / O-Ring	22059	
	Auger Hoisting Hook	21041	

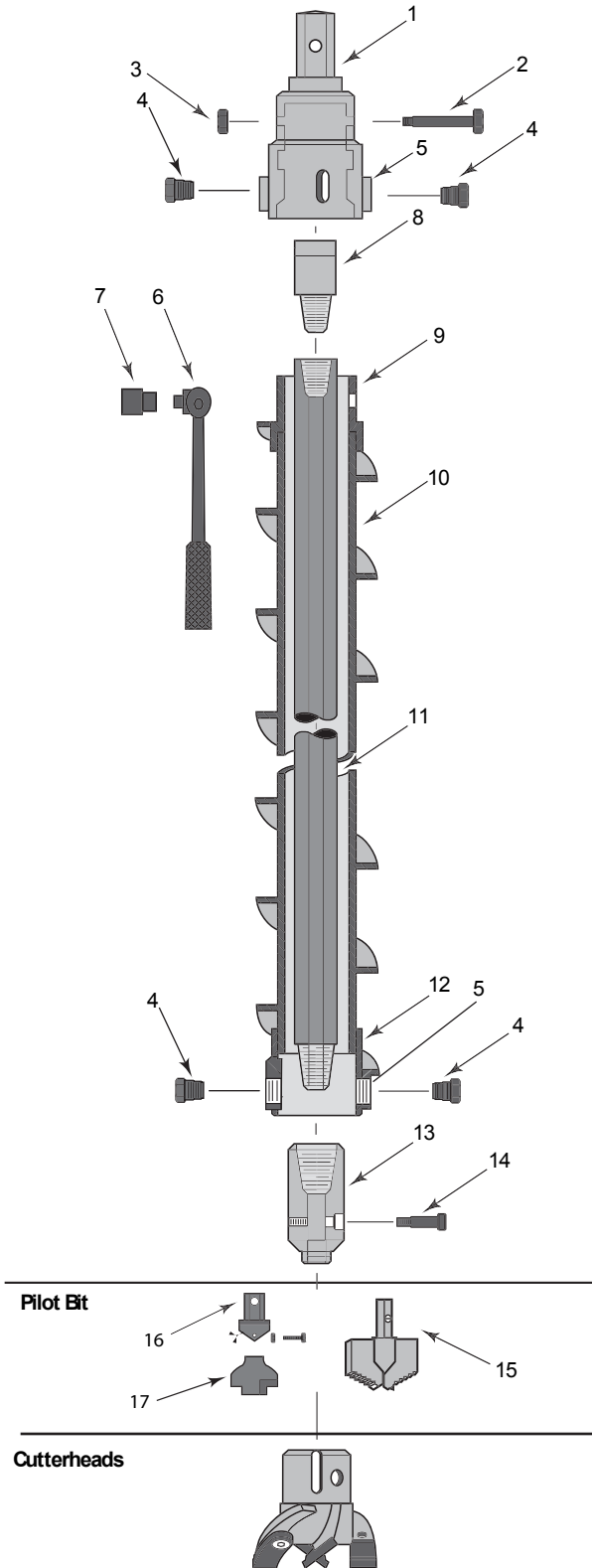


# Hollow Stem Augers

## 6-1/4" (83mm) 2-KEY Standard AUGER

Sizes are identified by hollow stem auger I.D.

## 10-1/4" (254mm) O.D



Ref	Description	Part No.	lb./kg.
1	Drive Cap, 1 5/8" (41mm) Hex Shank	21674	
1	Drive Cap, 2" (51mm) Hex Shank	21748	22 (10)
2	Rod Bolt	3100-0280	
3	Hex Nut	3122-0012	
4	<b>Lockbolt - 2 Req'd (Repair Only)</b>	<b>21025-I</b>	
4	<b>Hard Faced Lockbolt - 2 Req'd</b>	<b>21025HF-I</b>	
5	Bushing	21068-I	
6	Handle	3781-0009	
7	Socket	3782-0016	
8	Adapter: AW Rod Pin to Drive Cap	NA	
8	Adapter: AWJ Rod Pin to Drive Cap	NA	
8	Adapter: NW Rod Pin to Drive Cap	21692	11 (5)
8	Adapter: NWJ Rod Pin to Drive Cap	21693	11 (5)
9	Pin Coupling (Repair Only)	21734	6 (2.7)
10	<b>Auger Section: 5'0" (1.5m),</b>	<b>21680</b>	<b>69 (31.3)</b>
11	Center Rod: 5'0" (1.5m), AW	NA	22 (10.0)
11	Center Rod: 5'0" (1.5m), AWJ	NA	15 (6.8)
11	Center Rod: 5'0" (1.5m), NW	001608	32 (14.5)
11	Center Rod: 5'0" (1.5m), NWJ	006278	35 (15.9)
12	Box Coupling (Repair Only)	21737	6 (2.7)
13	Plug - 1-5/8" (29mm) Hex to NW Box	21701	11 (5)
13	Plug - 1-5/8" (29mm) Hex to NWJ Box	21702	11 (5)
14	Plug Bolt	3130-0170	
15	5T Style Pilot Bit	19009-I	
15	Pilot Bit, 3-Wing, 1-5/8" (29mm) Hex	19009-I	
16	Pilot Bit Lug	LHX141L-I	
17	Pilot Bit	TCH55171-I	
	Repair Key	21067	
	Clean Out Tap	21042	
	Auger Seal / O-Ring	21704	

# Hollow Stem Augers

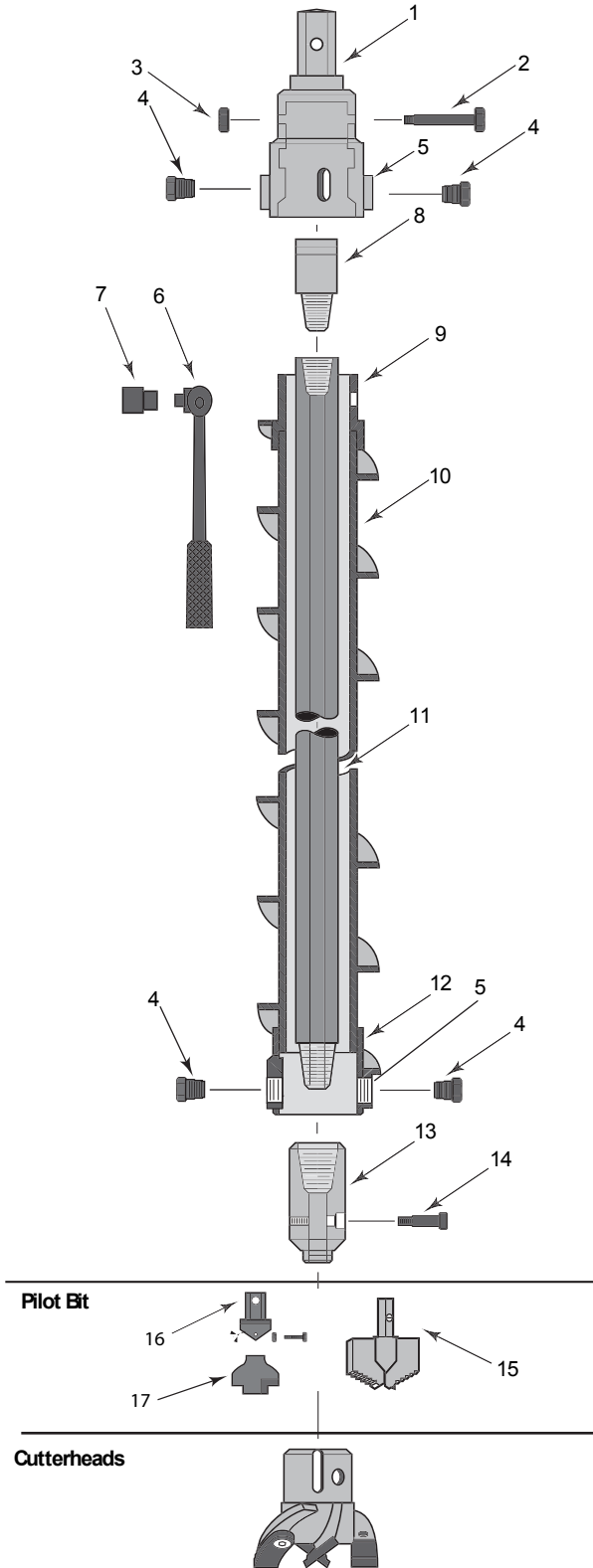
## 6-1/4" (83mm) 2-KEY HEAVY DUTY AUGER

H.D. key size is 5/8" (16mm)  
 Sizes are identified by hollow stem auger I.D.

**10-1/4" (254mm) O.D.**

### Component Parts

Ref	Description	Part No.	lb./kg.
1	Drive Cap, 1 5/8" (41mm) Hex Shank	22189	
1	Drive Cap, 2" (51mm) Hex Shank	22191	22 (10)
2	Rod Bolt	3100-0184	
3	Hex Nut	3122-0012	
4	Lockbolt - 2 Req'd (Repair Only)	21913-I	
4	Hard Faced Lockbolt - 2 Req'd	21913HF-I	
5	Bushing	21915-I	
6	Handle	3781-0009	
7	Socket	3782-0016	
8	Adapter: AW Rod Pin to Drive Cap	NA	5 (2.3)
8	Adapter: AWJ Rod Pin to Drive Cap	NA	5 (2.3)
8	Adapter: NW Rod Pin to Drive Cap	001608	11 (5)
8	Adapter: NWJ Rod Pin to Drive Cap	006278	11 (5)
9	Pin Coupling (Repair Only)	22213	6 (2.7)
10	Auger Section: 5'0" (1.5m),	150633	69 (31.3)
11	Center Rod: 5'0" (1.5m), AW	NA	22 (10.0)
11	Center Rod: 5'0" (1.5m), AWJ	NA	15 (6.8)
11	Center Rod: 5'0" (1.5m), NW	21701	32 (14.5)
11	Center Rod: 5'0" (1.5m), NWJ	21702	35 (15.9)
12	Box Coupling (Repair Only)	22212	6 (2.7)
13	Plug - 1-5/8" (29mm) Hex to NW Box	150306	11 (5)
13	Plug - 1-5/8" (29mm) Hex to NWJ Box	150377	11 (5)
14	Plug Bolt	3130-0170	
15	5T Style Pilot Bit	19007	
15	Pilot Bit, 3-Wing, 1-5/8" (29mm) Hex	19009-I	
16	Pilot Bit Lug	LHX141L-I	
17	Pilot Bit	TCH55171-I	
	Repair Key	21917	
	Clean Out Tap	21916	
	Auger Seal / O-Ring	22201	



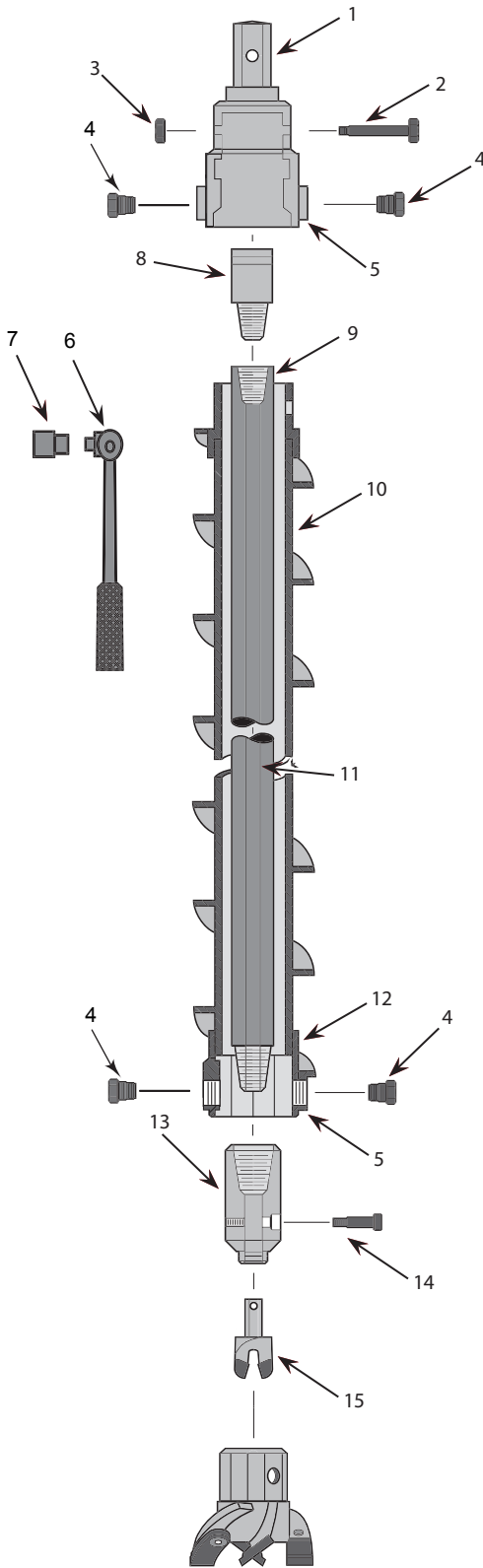
# Hollow Stem Augers

## Octagonal 8-Sided Hollow Stem Augers

3-1/4" (83mm)

### Octagonal Hollow Stem Auger

6-1/2" (165mm) O.D



Ref	Description	Part No.	lb./kg.
1	Drive Cap, 1-5/8" (41mm) Hex	330695-0	17 (7.7)
1	Drive Cap, 2" (51mm) Hex	330696-0	22 (10)
2	Drive Cap Bolt	3100-0184	
3	Drive Cap Nut	3122-0012	
4	Lockbolt - 1 Req'd	21025-I	
4	Lockbolt - 1 Req'd (Hard Faced)	21025HF-I	
5	Bushing	21068-1	
6	Handle	3781-0009	
7	Socket	3782-0016	
8	Adapter: AW Rod to Drive Cap	21197	5 (2.3)
9	Pin Coupling, Heat-treated (Repair Only)	130520-0	6 (2.7)
10	<b>Auger Section: 5'0" (1.5m),</b>	<b>330359-0</b>	<b>69 (31.3)</b>
11	Center Rod: 5'0" (1.5m), AW	001605	22 (10.0)
11	Center Rod: 5'0" (1.5m), AWJ	006276	15 (6.8)
11	Center Rod: 5'0" (1.5m), NW	001608	32 (14.5)
11	Center Rod: 5'0" (1.5m), NWJ	006278	35 (15.9)
12	Box Coupling (Repair Only)	330591-0	6 (2.7)
13	Plug - 1-1/8" (29mm) Hex to AW Box	21206	12 (5.4)
13	Plug - 1-1/8" (29mm) Hex to AWJ Box	150379	12 (5.4)
13	Plug - 1-1/8" (29mm) Hex to NW Box	150306	11 (5)
13	Plug - 1-1/8" (29mm) Hex to NWJ Box	150377	11 (5)
14	Plug Bolt	3130-0098	
15	Pilot Bit, 2-Prong, 1-1/8" (29mm) Hex	200024	2 (.9)
15	Pilot Bit Step Type	150574-01	
15	Pilot Bit w/replaceable teeth	19005-1	
	Clean Out Tap (For Bushing)	21042	
	Auger Hoisting Hook	21041	



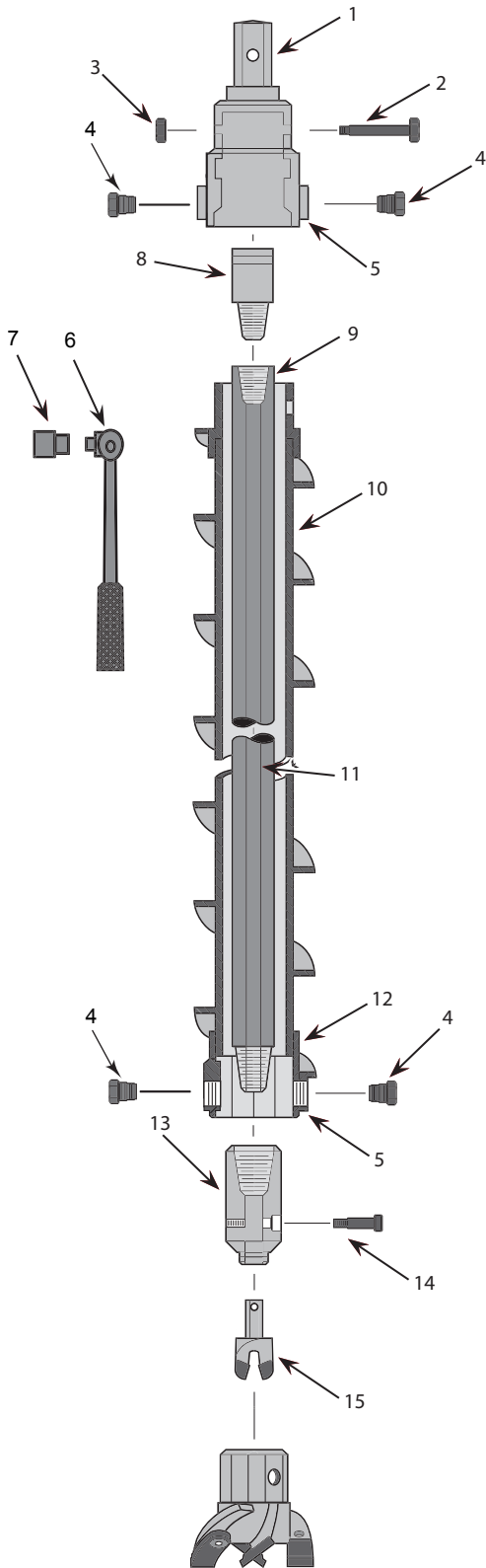
# Hollow Stem Augers

## Octagonal 8-Sided Hollow Stem Augers

**4-1/4" (108mm)**

### Octagonal Hollow Stem Auger

**7-5/8" (194mm) O.D**



Ref	Description	Part No.	lb./kg.
1	Drive Cap, 1-5/8" (41mm) Hex	330684	17 (7.7)
1	Drive Cap, 2" (51mm) Hex	330685-0	22 (10)
2	Drive Cap Bolt	3100-0279	
3	Drive Cap Nut	3122-0012	
4	Lockbolt - 2 Req'd	21025-I	
4	Lockbolt Hard Faced - 2 Req'd	21025HF-I	
5	Bushing	21068-I	
6	Handle	3781-0009	
7	Socket	3782-0016	
8	Adapter: AW Rod to Drive Cap	21482	5 (2.3)
8	Adapter: AW Rod to Drive Cap	21487	
9	Pin Coupling, Heat-treated (Repair Only)	130606-0	6 (2.7)
10	Auger Section: 5'0" (1.5m),	330608-0	69 (31.3)
11	Center Rod: 5'0" (1.5m), AW	001604	22 (10.0)
11	Center Rod: 5'0" (1.5m), AWJ	006276	15 (6.8)
11	Center Rod: 5'0" (1.5m), NW	001608	32 (14.5)
11	Center Rod: 5'0" (1.5m), NWJ	006278	35 (15.9)
12	Box Coupling (Repair Only)	330670-0	6 (2.7)
13	Plug - 1-1/8" (29mm) Hex to AW Box	150492	12 (5.4)
13	Plug - 1-1/8" (29mm) Hex to AWJ Box	150494	12 (5.4)
13	Plug - 1-1/8" (29mm) Hex to NW Box	150488	11 (5)
13	Plug - 1-1/8" (29mm) Hex to NWJ Box	150489	11 (5)
14	Plug Bolt	3100-279	
15	Pilot Bit, 2-Prong, 1-1/8" (29mm) Hex	004304	2 (.9)
15	Pilot Bit	150574-02	
15	Pilot bit w/ replaceable Teeth	19003-I	
	Clean Out Tap (For Bushing)	21042	
	Auger Hoisting Hook	21041	

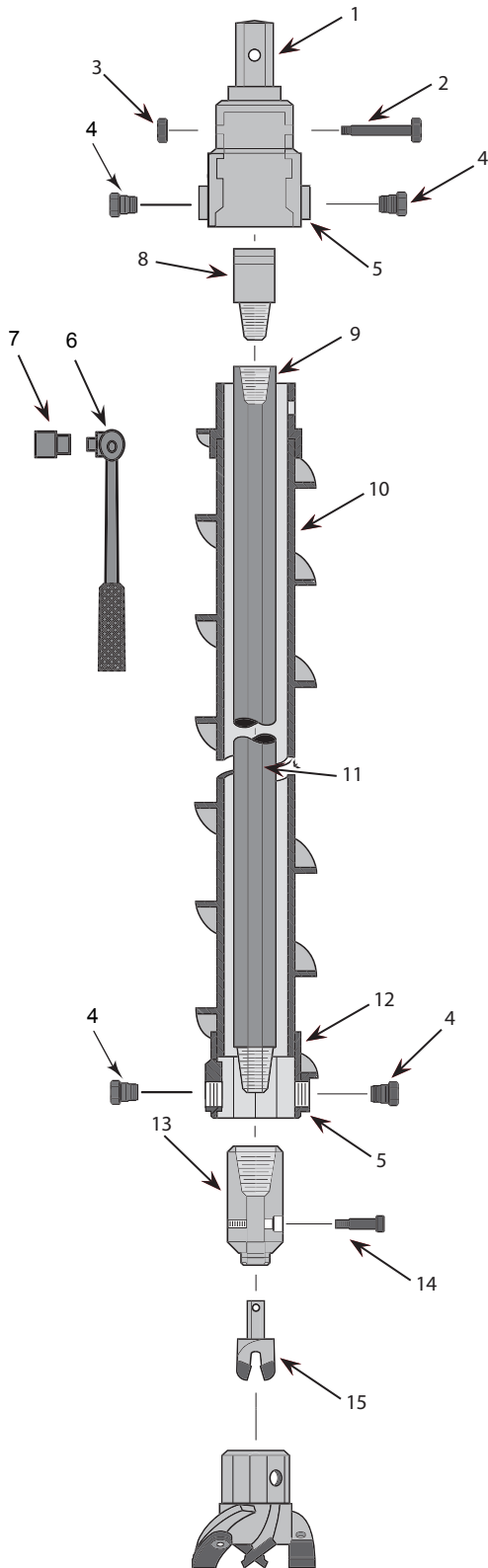
# Hollow Stem Augers

## Octagonal 8-Sided Hollow Stem Augers

6-1/4" (159mm)

### Octagonal Hollow Stem Auger

10-1/4" (260mm) O.D

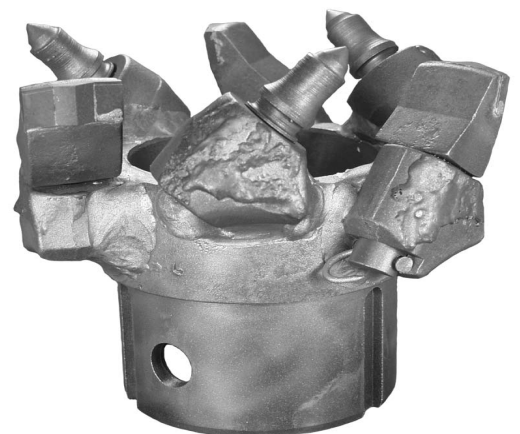
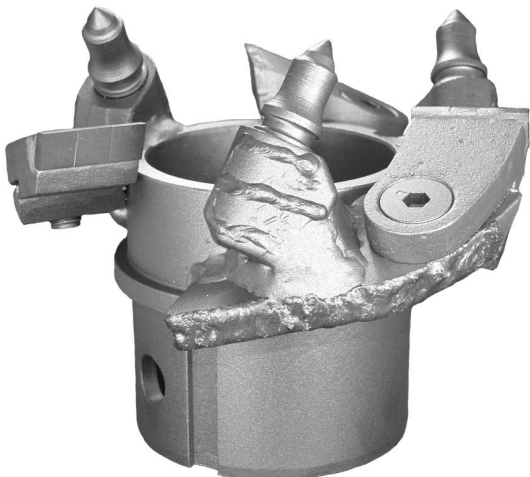
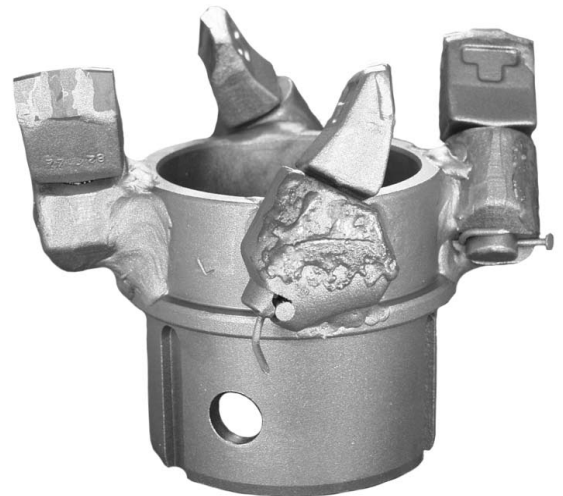
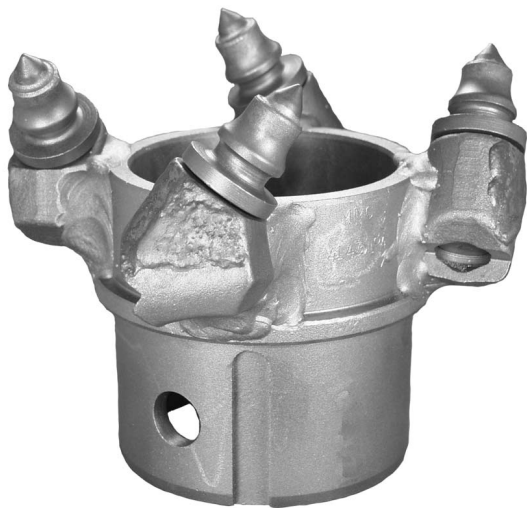
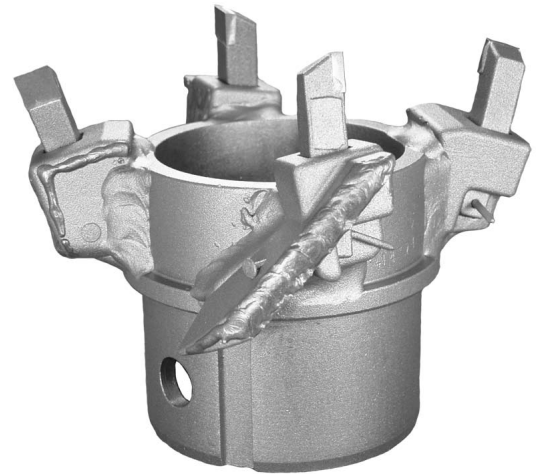


Ref	Description	Part No.	lb./kg.
1	Drive Cap, 1-5/8" (41mm) Hex	330837-0	17 (7.7)
1	Drive Cap, 2" (51mm) Hex	330691-0	22 (10)
2	Drive Cap Bolt	3100-0280	
3	Drive Cap Nut	3100-0280	
4	<b>Lockbolt - 2 Req'd</b>	<b>130660-0</b>	
5	Bushing	161273-0	
6	Handle	3781-0009	
7	Socket	3782-0016	
8	Adapter: NW Rod to Drive Cap	21692	5 (2.3)
9	Pin Coupling, Heat-treated (Repair Only)	130646-0	6 (2.7)
10	<b>Auger Section: 5'0" (1.5m),</b>	<b>330647-0</b>	<b>69 (31.3)</b>
11	Center Rod: 5'0" (1.5m), NW	001608	32 (14.5)
11	Center Rod: 5'0" (1.5m), NWJ	006278	35 (15.9)
12	Box Coupling (Repair Only)	330645-0	6 (2.7)
15	Pilot Bit	004950	
15	Pilot Bit	150574-03	
15	Pilot bit w/ replaceable Teeth	190045-1	
15	Pilot Bit Shank	004591	
	Clean Out Tap (For Bushing)	21042	
	Auger Hoisting Hook	21041	

# Cutterheads



Section  
3A



# Cutterheads

## Blade Cutterhead



# Hollow Stem Augers

## Blade Cutterhead

Auger	Description	Cutting Diameter	Part #	Lbs.	Kg.
2 Key	3 1/4 (83mm) DK Blade Cutterhead	7 1/2" (190mm) O.D.	ACH314250	11	5
	3 3/4 (95mm) DK Blade Cutterhead	8 1/2" (216mm) O.D.	ACH334250	16	7.3
	3 3/4 (95mm) DK HD Blade Cutterhead	8 1/2" (216mm) O.D.	ACH334250HD	16	7.3
	4 1/4 (108mm) DK Blade Cutterhead	8 3/4" (222mm) O.D.	ACH414250	16	7.3
	4 1/4 (108mm) DK HD Blade Cutter	8 3/4" (222mm) O.D.	ACH414250HD	16	7.3
	6 1/4 (159mm) DK Blade Cutterhead	11" (279mm) O.D.	ACH614250	23	10.4
	6 1/4 (159mm) DK HD Blade Cutterhead	11" (279mm) O.D.	ACH614250HD	23	10.4
	7 1/4 (184mm) DK HD Blade Cutterhead	12" (310mm) O.D.	ACH714250HD	33	15
	8 1/4 (210mm) DK HD Blade Cutterhead	13" (330mm) O.D.	ACH814250HD	35	15.9
3 Key	3 1/4 (83mm) TK Blade Cutterhead	7 1/2" (190mm) O.D.	ACH314350	11	5
	4 1/4 (108mm) TK Blade Cutterhead	8 3/4" (222mm) O.D.	ACH414350	12	5.4
	4 1/4 (108mm) TK HD Blade Cutterhead	8 3/4" (222mm) O.D.	ACH414350HD*	16	7.3
	6 5/8 (169mm) TK Blade Cutterhead	11 1/2" (292mm) O.D.	ACH658350	28	12.7
	6 5/8 (169mm) TK HD Blade Cutterhead	11 1/2" (292mm) O.D.	ACH658350HD*	29	13.2
	8 1/4 (210mm) TK HD Blade Cutterhead	13" (330mm) O.D.	ACH814350HD	35	15.9
	10 1/4 (260mm) TK HD Blade Cutterhead	15" (381mm) O.D.	ACH1014350HD	52	23.6
	12 1/4 (311mm) TK HD Blade Cutterhead	17 3/4" (451mm) O.D.	ACH1214350HD	80	36.3
	Octagonal	3 1/4 (83mm) Octagonal Cutterhead	7 1/2" (190mm) O.D.	ACH314850	18
4 1/4 (108mm) Octagonal Cutterhead		8 3/4" (222mm) O.D.	ACH414850	25	11.3
6 1/4 (159mm) Octagonal Cutterhead		11" (279mm) O.D.	ACH614850	30	13.6
8 1/4 (210mm) Octagonal Cutterhead		13" (330mm) O.D.	ACH814850	35	15.9
10 1/4 (260mm) Octagonal Cutterhead		15" (381mm) O.D.	ACH1014850	50	22.7
12 1/4 (311mm) Octagonal Cutterhead		17 3/4" (451mm) O.D.	ACH1214850	75	34.0

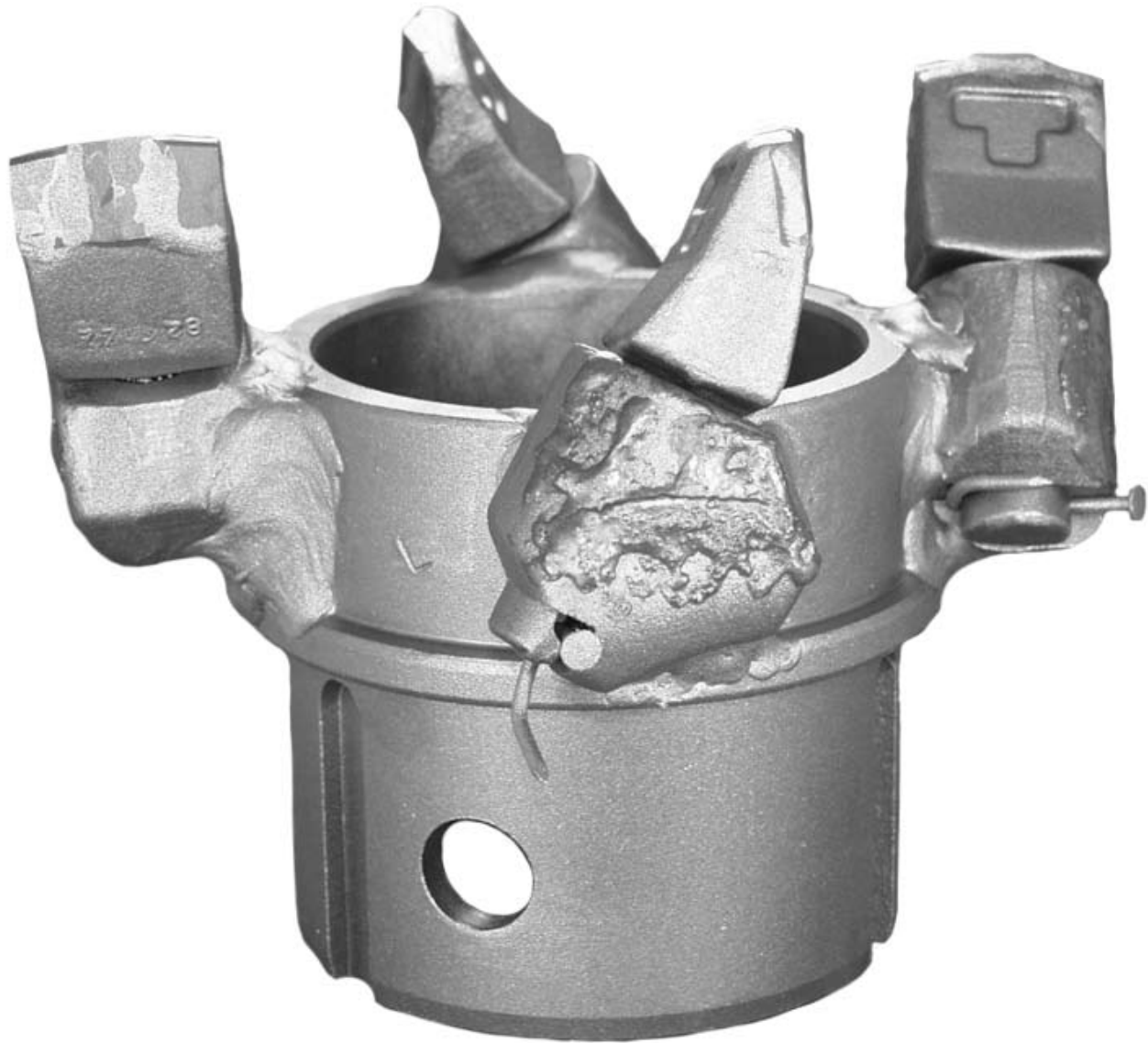
\* For Mills Machine™ HD 3 Key Augers

**Blade Cutterhead Components**  
**See Section One for Components**

Size	004303-I Blade Cutters	001293-I Blade Cutter Bolts
3 1/4 (83mm)	2	2
3 3/4 (95mm)	3	3
4 1/4 (108mm)	3	3
6 1/4 (159mm)	4	4
6 5/8 (168mm)	4	4
8 1/4 (210mm)	5	5
10 1/4 (260mm)	6	6
12 1/4 (311mm)	7	7

# Cutterheads

## Spade Cutterhead



# Hollow Stem Augers

## Spade Cutterhead

Auger	Description	Cutting Diameter	Part #	Lbs.	Kg.
2 Key	2 1/4 (57mm) DK Spade Cutterhead	6 1/2" (165mm) O.D.	ACH214251	10	4.5
	3 1/4 (83mm) DK Spade Cutterhead	7 1/2" (190mm) O.D.	ACH314251	12	5.5
	3 3/4 (95mm) DK Spade Cutterhead	8 1/2" (216mm) O.D.	ACH334251	20	9.1
	3 3/4 (95mm) DK HD Spade Cutterhead	8 1/2" (216mm) O.D.	ACH334251HD	20	9.1
	4 1/4 (108mm) DK Spade Cutterhead	8 3/4" (222mm) O.D.	ACH414251	20	9.1
	4 1/4 (108mm) DK HD Spade Cutterhead	8 3/4" (222mm) O.D.	ACH414251HD	20	9.1
	6 1/4 (159mm) DK Spade Cutterhead	11" (279mm) O.D.	ACH614251	22	10
	6 1/4 (159mm) DK HD Spade Cutterhead	11" (279mm) O.D.	ACH614251HD	22	10
	7 1/4 (184mm) DK HD Spade Cutterhead	12" (310mm) O.D.	ACH714251HD	33	15
	8 1/4 (210mm) DK HD Spade Cutterhead	13" (330mm) O.D.	ACH814251HD	35	15.9
3 Key	3 1/4 (83mm) TK Spade Cutterhead	7 1/2" (190mm) O.D.	ACH314351	12	5.5
	4 1/4 (108mm) TK Spade Cutterhead	8 3/4" (222mm) O.D.	ACH414351	14	6.4
	4 1/4 (108mm) TK HD Spade Cutterhead	8 3/4" (222mm) O.D.	ACH414351HD*	20	9.1
	6 5/8 (169mm) TK Spade Cutterhead	11 1/2" (292mm) O.D.	ACH658351	25	11.8
	6 5/8 (169mm) TK HD Spade Cutterhead	11 1/2" (292mm) O.D.	ACH658351HD*	26	11.8
	8 1/4 (210mm) TK HD Spade Cutterhead	13" (330mm) O.D.	ACH814351HD	35	15.9
	10 1/4 (260mm) TK HD Spade Cutterhead	15" (381mm) O.D.	ACH1014351HD	48	21.8
	12 1/4 (311mm) TK HD Spade Cutterhead	17 3/4" (451mm) O.D.	ACH1214351HD	74	33.6
Octagonal	3 1/4 (83mm) Octagonal Cutterhead	7 1/2" (190mm) O.D.	ACH314851	18	8.2
	4 1/4 (108mm) Octagonal Cutterhead	8 3/4" (222mm) O.D.	ACH414851	25	11.3
	6 1/4 (159mm) Octagonal Cutterhead	11" (279mm) O.D.	ACH614851	30	13.6
	8 1/4 (210mm) Octagonal Cutterhead	13" (330mm) O.D.	ACH814851	35	15.9
	10 1/4 (260mm) Octagonal Cutterhead	15" (381mm) O.D.	ACH1014851	50	22.7
	12 1/4 (311mm) Octagonal Cutterhead	17 3/4" (451mm) O.D.	ACH1214851	75	34.0

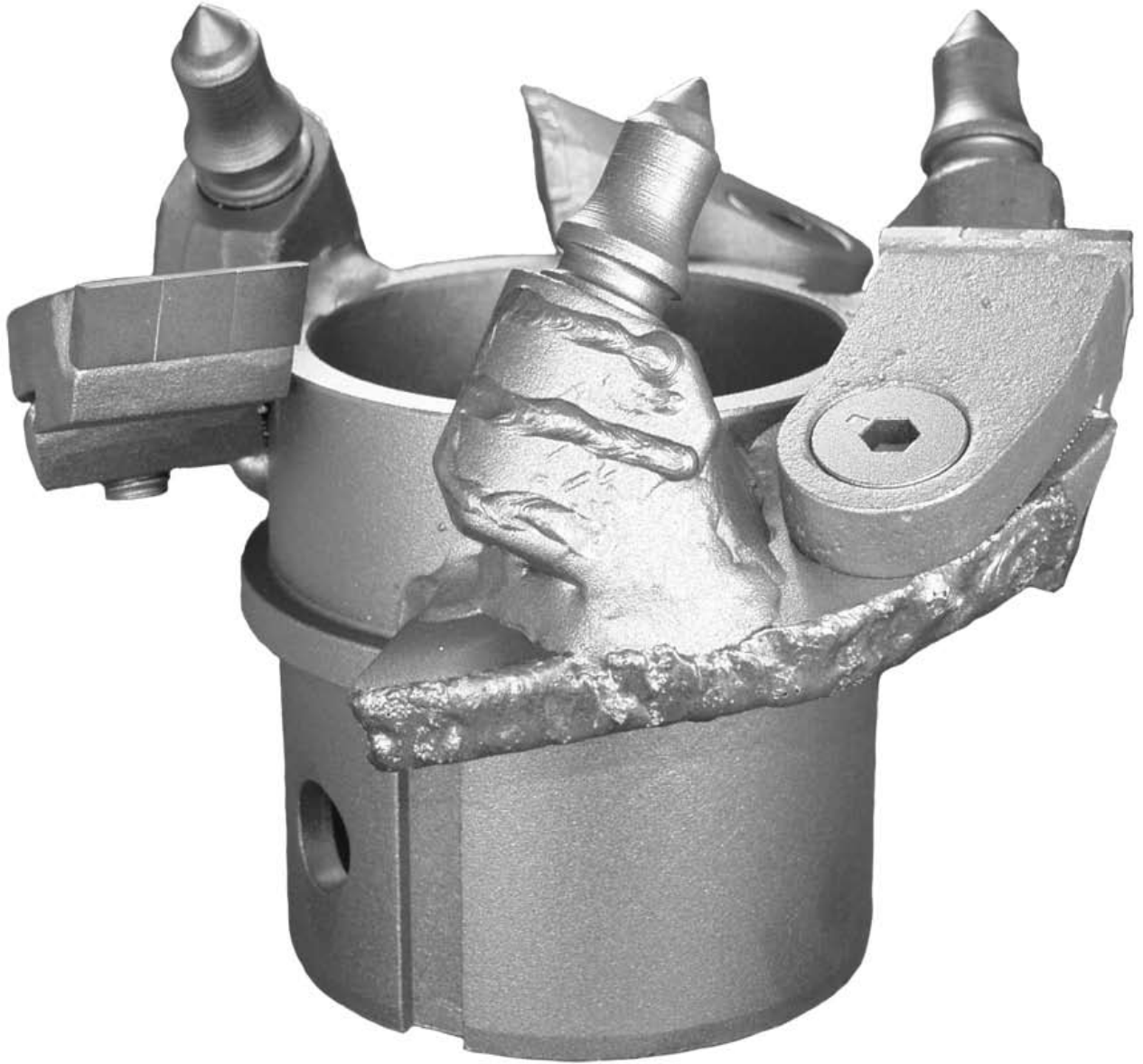
\* For Mills Machine™ HD 3 Key Augers

## Spade Cutterhead Componets See Section One for Componets

Size	AR15087LR-I Spade	C87B-I Block
2 1/4" (57mm)	2	2
3 1/4" (82mm)	3	3
3 3/4" (95mm)	4	4
4 1/4" (108mm)	4	4
6 1/4" (159mm)	5	5
6 5/8" (168mm)	5	5
7 1/4" (184mm)	5	5
8 1/4" (210mm)	5	5
10 1/4" (260mm)	8	8
12 1/4" (311mm)	10	10

# Cutterheads

## Blade/Bullet Cutterhead





# Cutterheads

## Blade/Bullet Cutterhead

Auger	Description	Cutting Diameter	Part #	Lbs.	Kg.
2-Key	3 1/4 (83mm) DK Blade/Bullet Cutterhead	7 1/2" (190mm) O.D.	ACH314260	14	6.4
	3 3/4 (95mm) DK Blade/Bullet Cutterhead	8 1/2" (216mm) O.D.	ACH334260	20	9.1
	3 3/4 (95mm) DK HD Blade/Bullet Cutterhead	8 1/2" (216mm) O.D.	ACH334260HD	20	9.1
	4 1/4 (108mm) DK Blade/Bullet Cutterhead	8 3/4" (222mm) O.D.	ACH414260	20	9.1
	4 1/4 (108mm) DK HD Blade/Bullet Cutterhead	8 3/4" (222mm) O.D.	ACH414260HD	20	9.1
	6 1/4 (159mm) DK Blade/Bullet Cutterhead	11" (279mm) O.D.	ACH614260	28	12.7
	6 1/4 (159mm) DK HD Blade/Bullet Cutterhead	11" (279mm) O.D.	ACH614260HD	28	12.7
	7 1/4 (184mm) DK HD Blade/Bullet Cutterhead	12" (310mm) O.D.	ACH714260HD	38	17.2
	8 1/4 (210mm) DK HD Blade/Bullet Cutterhead	13" (330mm) O.D.	ACH814260HD	40	18.1
3-Key	3 1/4 (83mm) TK Blade/Bullet Cutterhead	7 1/2" (190mm) O.D.	ACH314360	14	6.4
	4 1/4 (108mm) TK Blade/Bullet Cutterhead	8 3/4" (222mm) O.D.	ACH414360	18	8.2
	4 1/4 (108mm) TK HD Blade/Bullet Cutterhead.	8 3/4" (222mm) O.D.	ACH414360HD*	20	9.1
	6 5/8 (169mm) TK Blade/Bullet Cutterhead	11 1/2" (292mm) O.D.	ACH658360	33	15
	6 5/8 (169mm) TK HD Blade/Bullet Cutterhead	11 1/2" (292mm) O.D.	ACH658360HD*	34	15.4
	8 1/4 (210mm) TK HD Blade/Bullet Cutterhead	13" (330mm) O.D.	ACH814360HD	40	18.1
	10 1/4 (260mm) TK HD Blade/Bullet Cutterhead	15" (381mm) O.D.	ACH1014360HD	55	24.9
	12 1/4 (311mm) TK HD Blade/Bullet Cutterhead	17 3/4" (451mm) O.D.	ACH1214360HD	69	31.3
Octagonal	3 1/4 (83mm) Octagonal Cutterhead	7 1/2" (190mm) O.D.	ACH314860	18	8.2
	4 1/4 (108mm) Octagonal Cutterhead	8 3/4" (222mm) O.D.	ACH414860	25	11.3
	6 1/4 (159mm) Octagonal Cutterhead	11" (279mm) O.D.	ACH614860	30	13.6
	8 1/4 (210mm) Octagonal Cutterhead	13" (330mm) O.D.	ACH814860	35	15.9
	10 1/4 (260mm) Octagonal Cutterhead	15" (381mm) O.D.	ACH1014860	50	22.7
	12 1/4 (311mm) Octagonal Cutterhead	17 3/4" (451mm) O.D.	ACH1214860	75	34.0

\* For Mills Machine™ HD 3 Key Augers

## Blade/Bullet Cutterhead Compents

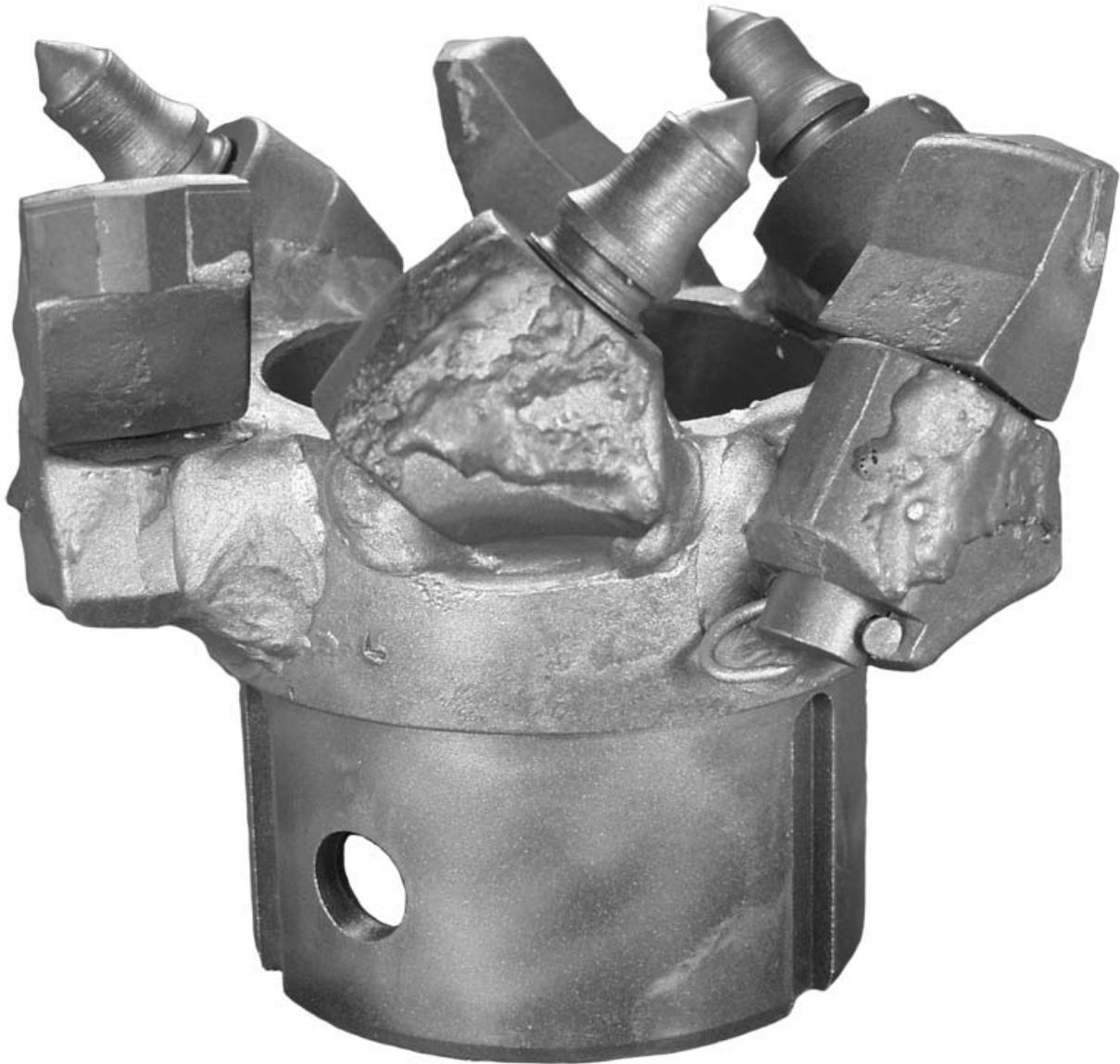
### See Section One for Componets

Size	004303-I Blade Cutters	001293-I Bolts	C23 Bullet Cutters*	C20-I Bullet Blocks
3 1/4 (83mm)	2	2	2	2
3 3/4 (95mm)	3	3	3	3
4 1/4 (108mm)	3	3	3	3
6 1/4 (159mm)	4	4	4	4
6 5/8 (168mm)	4	4	4	4
7 1/4 (184mm)	5	5	5	5
8 1/4 (210mm)	5	5	5	5
10 1/4 (260mm)	6	6	6	6
12 1/4 (311mm)	7	7	7	7

\* Optional Bullet Bit C21FHD (See Section One)

# Cutterheads

## Spade/Bullet Cutterhead



# Cutterheads

## Spade/Bullet Cutterhead

Augers	Description	Cutting Diameter	Part #	Lbs.	Kg.
2 Key	2 1/4 (57mm) DK Spade/Bullet Cutterhead	6 1/2" (165mm) O.D.	ACH214261	9	4.1
	3 1/4 (83mm) DK Spade/Bullet Cutterhead	7 1/2" (190mm) O.D.	ACH314261	9	4.1
	3 3/4 (95mm) DK Spade/Bullet Cutterhead	8 1/2" (216mm) O.D.	ACH334261	22	10
	3 3/4 (95mm) DK HD Spade/Bullet Cutterhead	8 1/2" (216mm) O.D.	ACH334261HD	22	10
	4 1/4 (108mm) DK Spade/Bullet Cutterhead	8 3/4" (222mm) O.D.	ACH414261	22	10
	4 1/4 (108mm) DK HD Spade/Bullet Cutterhead	8 3/4" (222mm) O.D.	ACH414261HD	22	10
	6 1/4 (159mm) DK Spade/Bullet Cutterhead	11" (279mm) O.D.	ACH614261	27	12.2
	6 1/4 (159mm) DK HD Spade/Bullet Cutterhead	11" (279mm) O.D.	ACH614261HD	27	12.2
	7 1/4 (184mm) DK HD Spade/Bullet Cutterhead	12" (310mm) O.D.	ACH714261HD	35	15.9
	8 1/4 (210mm) DK HD Spade/Bullet Cutterhead	13" (330mm) O.D.	ACH814261HD	37	16.8
3 Key	3 1/4 (83mm) TK Spade/Bullet Cutterhead	7 1/2" (190mm) O.D.	ACH314361	12	5.5
	4 1/4 (108mm) TK Spade/Bullet Cutterhead	8 3/4" (222mm) O.D.	ACH414361	16	7.3
	4 1/4 (108mm) TK HD Spade/Bullet Cutterhead	8 3/4" (222mm) O.D.	ACH414361HD*	22	10
	6 5/8 (169mm) TK Spade/Bullet Cutterhead	11 1/2" (292mm) O.D.	ACH658361	30	13.6
	6 5/8 (169mm) TK HD Spade/Bullet Cutterhead	11 1/2" (292mm) O.D.	ACH658361HD *	30	13.6
	8 1/4 (210mm) TK HD Spade/Bullet Cutterhead	13" (330mm) O.D.	ACH814361HD	37	16.8
	10 1/4 (260mm) TK HD Spade/Bullet Cutterhead	15" (381mm) O.D.	ACH1014361HD	54	24.5
	12 1/4 (311mm) TK HD Spade/Bullet Cutterhead	17 3/4" (451mm) O.D.	ACH1214361HD	78	35.4
Octagonal	3 1/4 (83mm) Octagonal Cutterhead	7 1/2" (190mm) O.D.	ACH314861	18	8.2
	4 1/4 (108mm) Octagonal Cutterhead	8 3/4" (222mm) O.D.	ACH414861	25	11.3
	6 1/4 (159mm) Octagonal Cutterhead	11" (279mm) O.D.	ACH614861	30	13.6
	8 1/4 (210mm) Octagonal Cutterhead	13" (330mm) O.D.	ACH814861	35	15.9
	10 1/4 (260mm) Octagonal Cutterhead	15" (381mm) O.D.	ACH1014861	50	22.7
	12 1/4 (311mm) Octagonal Cutterhead	17 3/4" (451mm) O.D.	ACH1214861	75	34.0

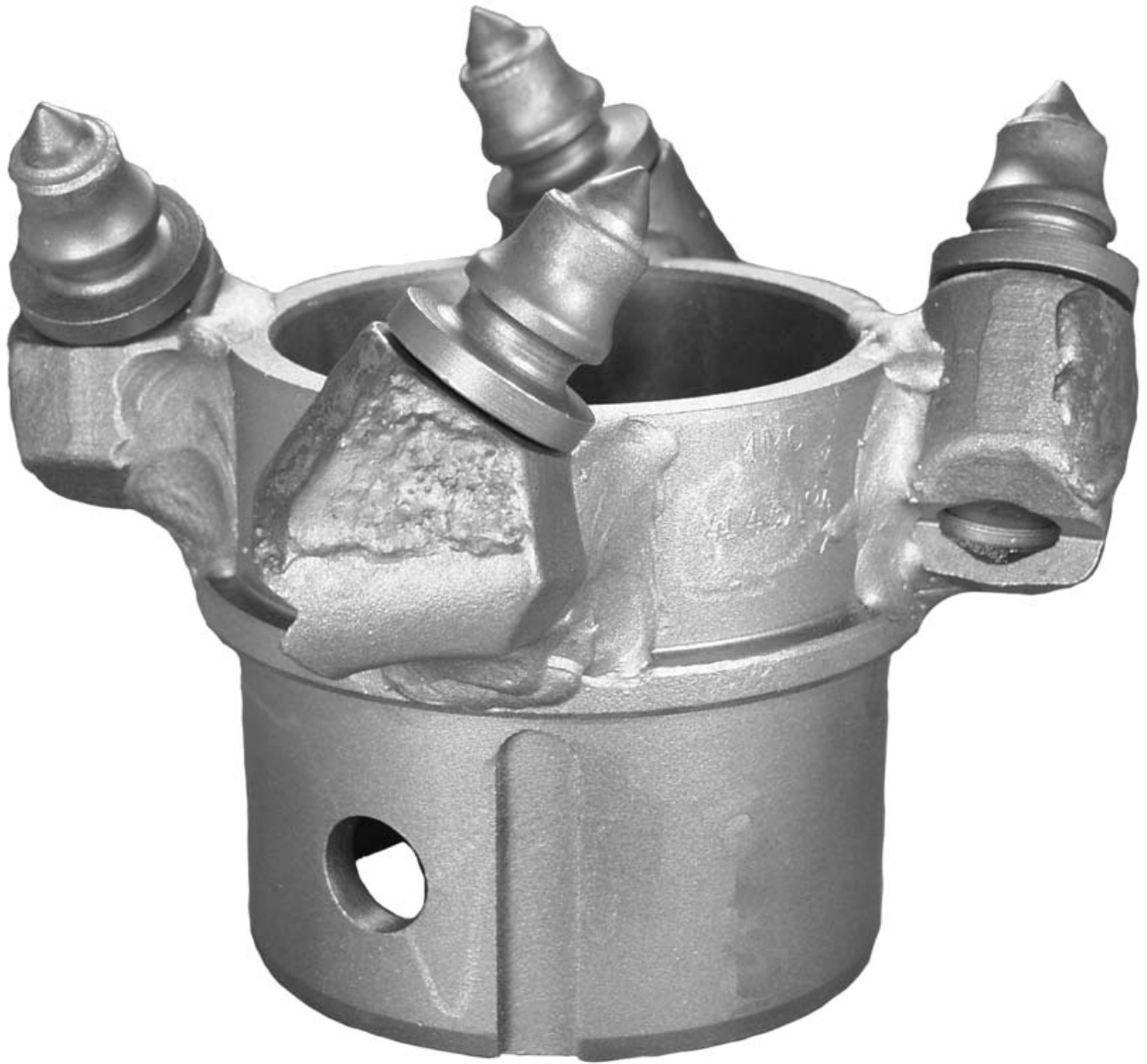
\* For Mills Machine™ HD 3 Key Augers

## Spade/Bullet Components See Section One for Components

Size	AR15087LR-I Spade	C87B-I Block	C23 Bullet	C20-I Blocks
2 1/4" (57mm)	2	2	2	2
3 1/4" (95mm)	2	2	2	2
3 3/4" (95mm)	3	3	3	3
4 1/4" (108mm)	3	3	3	3
6 1/4" (159mm)	4	4	4	4
6 5/8" (168mm)	4	4	4	4
7 1/4" (184mm)	4	4	4	4
8 1/4" (210mm)	4	4	4	4
10 1/4" (260mm)	5	5	5	5
12 1/4" (311mm)	6	6	6	6

# Cutterheads

## Bullet Cutterhead



# Cutterheads

## Bullet Cutterhead

Augers	Description	Cutting Diameter	Part #	Lbs.	Kg.
2 Key	2 1/4 (57mm) DK Bullet Cutterhead	6 1/2" (165mm) O.D.	ACH214270	10	4.5
	3 1/4 (83mm) DK Bullet Cutterhead	7 1/2" (190mm) O.D.	ACH314270	10	4.5
	3 3/4 (95mm) DK Bullet Cutterhead	8 1/2" (216mm) O.D.	ACH334270	22	10
	3 3/4 (95mm) DK HD Bullet Cutterhead	8 1/2" (216mm) O.D.	ACH334270HD	22	10
	4 1/4 (108mm) DK Bullet Cutterhead	8 3/4" (222mm) O.D.	ACH414270	22	10
	4 1/4 (108mm) DK HD Bullet Cutterhead	8 3/4" (222mm) O.D.	ACH414270HD	22	10
	6 1/4 (159mm) DK Bullet Cutterhead	11" (279mm) O.D.	ACH614270	29	13.2
	6 1/4 (159mm) DK HD Bullet Cutterhead	11" (279mm) O.D.	ACH614270HD	29	13.2
	7 1/4 (184mm) DK HD Bullet Cutterhead	12" (310mm) O.D.	ACH714270HD	35	15.9
	8 1/4 (210mm) DK HD Bullet Cutterhead	13" (330mm) O.D.	ACH814270HD	37	16.8
3 Key	3 1/4 (83mm) TK Bullet Cutterhead	7 1/2" (190mm) O.D.	ACH314370	12	5.5
	4 1/4 (108mm) TK Bullet Cutterhead	8 3/4" (222mm) O.D.	ACH414370	16	7.3
	4 1/4 (108mm) TK HD Bullet Cutterhead	8 3/4" (222mm) O.D.	ACH414370HD*	22	10
	6 5/8 (169mm) TK Bullet Cutterhead	11 1/2" (292mm) O.D.	ACH658370	34	15.4
	6 5/8 (169mm) TK HD Bullet Cutterhead	11 1/2" (292mm) O.D.	ACH658370HD*	34	15.4
	8 1/4 (210mm) TK HD Bullet Cutterhead	13" (330mm) O.D.	ACH814370HD	37	16.8
	10 1/4 (260mm) TK HD Bullet Cutterhead	15" (381mm) O.D.	ACH1014370HD	56	25.4
	12 1/4 (311mm) TK HD Bullet Cutterhead	17 3/4" (451mm) O.D.	ACH1214370HD	69	31.3
Octagonal	3 1/4 (83mm) Octagonal Cutterhead	7 1/2" (190mm) O.D.	ACH314870	18	8.2
	4 1/4 (108mm) Octagonal Cutterhead	8 3/4" (222mm) O.D.	ACH414870	25	11.3
	6 1/4 (159mm) Octagonal Cutterhead	11" (279mm) O.D.	ACH614870	30	13.6
	8 1/4 (210mm) Octagonal Cutterhead	13" (330mm) O.D.	ACH814870	35	15.9
	10 1/4 (260mm) Octagonal Cutterhead	15" (381mm) O.D.	ACH1014870	50	22.7
	12 1/4 (311mm) Octagonal Cutterhead	17 3/4" (451mm) O.D.	ACH1214870	75	34.0

\* For Mills Machine™ HD 3 Key Augers

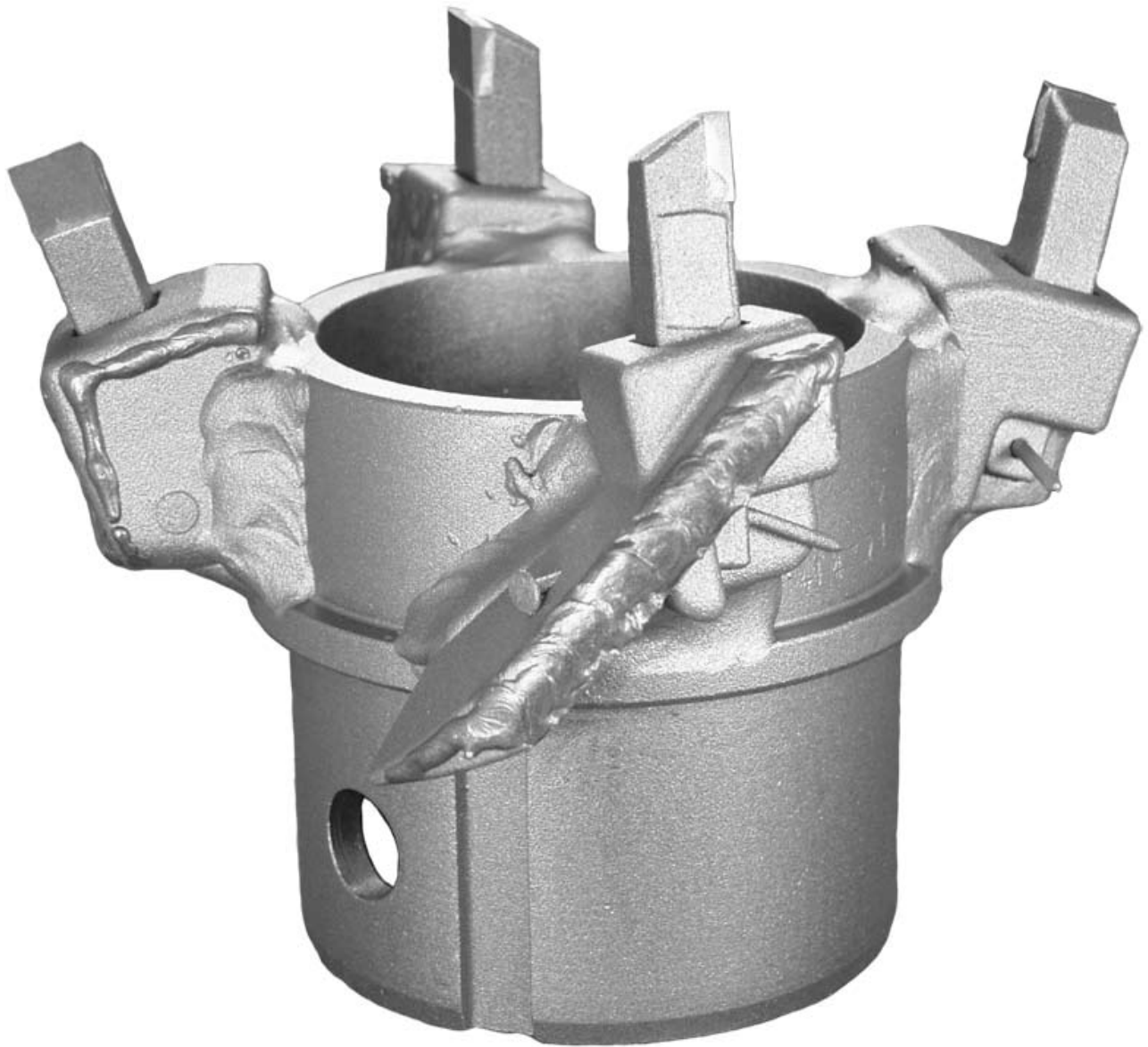
## Bullet Cutterhead Components

### See Section One for Componets

Size	C23 Bullet	C20-I Blocks
2 1/4 (57mm)	4	4
3 1/4 (95mm)	4	4
3 3/4 (95mm)	6	6
4 1/4 (108mm)	6	6
6 1/4 (159mm)	8	8
6 5/8 (168mm)	8	8
7 1/4 (184mm)	10	10
8 1/4 (210mm)	10	10
10 1/4 (260mm)	10	10
12 1/4 (311mm)	12	12

# Cutterheads

## 5-T Cutterhead



# Cutterheads

## 5-T Cutterhead

Auger	Description	Cutting Diameter	Part #	Lbs.	Kg.
<b>2 Key</b>	2 1/4 (57mm) DK 5-T Cutterhead	6 1/2" (165mm) O.D.	ACH214271	-	-
	3 1/4 (83mm) DK 5-T Cutterhead	7 1/2" (190mm) O.D.	ACH314271	-	-
	3 3/4 (95mm) DK 5-T Cutterhead	8 1/2" (216mm) O.D.	ACH334271	22	10
	3 3/4 (95mm) DK HD 5-T Cutterhead	8 1/2" (216mm) O.D.	ACH334271HD	22	10
	4 1/4 (108mm) DK 5-T Cutterhead	8 3/4" (222mm) O.D.	ACH414271	22	10
	4 1/4 (108mm) DK HD 5-T Cutterhead	8 3/4" (222mm) O.D.	ACH414271HD	22	10
	6 1/4 (159mm) DK 5-T Cutterhead	11" (279mm) O.D.	ACH6142718	-	-
	6 1/4 (159mm) DK HD 5-T Cutterhead	11" (279mm) O.D.	ACH614271HD8	-	-
<b>3 Key</b>	3 1/4 (83mm) TK 5-T Cutterhead	7 1/2" (190mm) O.D.	ACH314371	-	-
	4 1/4 (108mm) TK 5-T Cutterhead	8 3/4" (222mm) O.D.	ACH414371	-	-
	4 1/4 (108mm) TK HD 5-T Cutterhead	8 3/4" (222mm) O.D.	ACH414371HD*	-	-
	6 5/8 (169mm) TK 5-T Cutterhead	11 1/2" (292mm) O.D.	ACH6583718	-	-
	6 5/8 (169mm) TK HD 5-T Cutterhead	11 1/2" (292mm) O.D.	ACH6583718HD*	-	-
<b>Octagonal</b>	3 1/4 (83mm) Octagonal Cutterhead	7 1/2" (190mm) O.D.	ACH314871	18	8.2
	4 1/4 (108mm) Octagonal Cutterhead	8 3/4" (222mm) O.D.	ACH414871	25	11.3
	6 1/4 (159mm) Octagonal Cutterhead	11" (279mm) O.D.	ACH614871	30	13.6
	8 1/4 (210mm) Octagonal Cutterhead	13" (330mm) O.D.	ACH814871	35	15.9
	10 1/4 (260mm) Octagonal Cutterhead	15" (381mm) O.D.	ACH1014871	50	22.7
	12 1/4 (311mm) Octagonal Cutterhead	17 3/4" (451mm) O.D.	ACH1214871	75	34.0

\* For Mills Machine™ HD 3 Key Augers

## 5-T Cutterhead Components See Section One for Components

Size	5-T Cutters	5-T Cutter Blocks	5-T Flighted Blocks
2 1/4" (57mm)	4	2	2
3 1/4" (83mm)	4	2	2
3 3/4" (95mm)	4	2	2
4 1/4" (108mm)	4	2	2
6 1/4" (159mm)	8	4	4
6 5/8" (168mm)	8	4	4
8 1/4" (210mm)	8	4	4
10 1/4" (260mm)	12	6	6
12 1/4" (311mm)	22	6	6

# Cutterhead Flights



Bottom of Flight Shown

**Flight Edge is Hard Faced for Durability**

Description	Part #	Lbs.	Kg.
Flight Segment - 3 1/4 Cutterhead	150593	1.4	.64
Flight Segment - 3 1/4 Bullet Cutterhead	150593-01	1.4	.64
Flight Segment - 4 1/4 Cutterhead	150586	1.4	.64
Flight Segment - 4 1/4 Bullet Cutterhead	150586-01	1.4	.64
Flight Segment - 6 5/8 Cutterhead	150587	1.5	.68
Flight Segment - 6 5/8 Bullet Cutterhead	15087-01	1.5	.68
Flight Segment - 8 1/4 Cutterhead	150593	1.5	.68
Flight Segment - 8 1/4 Bullet Cutterhead	150593-01	1.5	.68
Flight Segment - 10 1/4 Cutterhead	150681-01	1.7	.77
Flight Segment - 12 1/4 Cutterhead	150681-01	1.7	.77

\* Bullet Head Flights dont have bolt hole

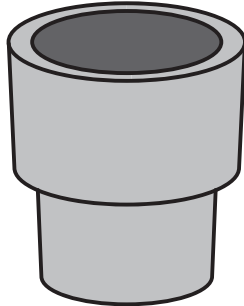


# Hollow Stem Augers

## Rod Holding Slip & Spider Bowl

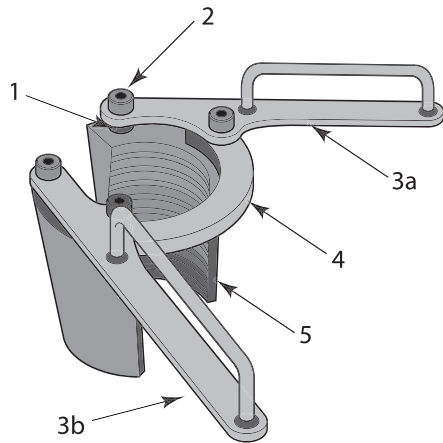
A rod holding slip is used in conjunction with a spider bowl to speed rod handling by centering the drill rod or casing and holding it securely. The spider bowl centers and holds the slip in the hollow stem auger at the top of the drill string. This technique eliminates the need for pipe wrenches or other holding devices. Order a spider bowl to fit each hollow stem auger size used and a slip assembly for each rod or casing size used.

**Hollow Stem Auger sizes are identified by auger I.D.**



Description	Part #	lb./kg.
<b>Auger Spider Bowl: LITE-FLITE AUGER</b>		
2-1/4" (57mm)	150184-12	12 (5.4)
<b>Auger Spider Bowl: THREADED AUGER</b>		
2-1/2" (64mm)	150184-01	14 (6.4)
3-3/8" (86mm)	150184-02	15 (6.8)
4" (102mm)	150184-03	15 (6.8)
6" (152mm)	150184-04	19 (8.6)
<b>Auger Spider Bowl: 3-KEY/2-KEY AUGERS</b>		
3-1/4" (83mm)	150184-08	14 (6.4)
4-1/4" (108mm)	150184-09	16 (7.3)
6-1/4" (159mm)	150184-13	
6-1/2" (168mm)	150184-10	22 (10)
8-1/4" (210mm)	150184-11	25 (11.3)
10-1/4" (260mm)	150184-14	
12-1/4" (311mm)	150184-15	

## Rod Holding Slip Assembly



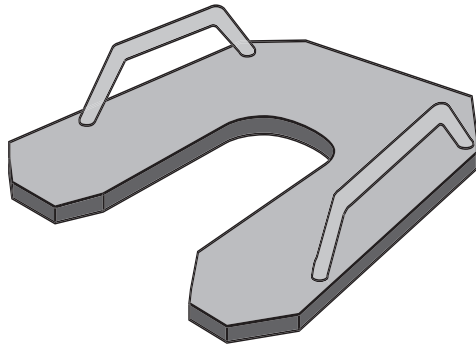
Description	Part #	lb./kg.
A Rod	61013-06	7 (3.2)
AW,AWJ & AQ Rod	61013-01	7 (3.2)
BW & BQ Rod	61013-02	6 (2.7)
N Rod	61013-08	6 (2.7)
NW & NWJ Rod	61013-03	6 (2.7)
NQ Rod	61013-04	6 (2.7)
NXWL Rod	61013-05	6 (2.7)

## Component Parts

Ref	Description	Part #	lb./kg.
1	Spacer (2 req'd)	210032-03	
2	Hex Screw (4 req'd)	3319-0001	
3a	Handle (L)	150361	
3b	Handle (R)	150171	
4	Link	150172-01	
5	Rod Holding Slip, AWJ & AW Rod (2 req'd)	150173-01	3 (1.4)
5	Rod Holding Slip, BW & BQ Rod (2 req'd)	150174-01	2 (.9)
5	Rod Holding Slip, NW & NWJ Rod (2 req'd)	150175-01	2 (.9)
5	Rod Holding Slip, NQ Rod (2 req'd)	150176-01	2 (.9)
5	Rod Holding Slip, NXWL Rod (2 req'd)	150177-01	2 (.9)
5	Rod Holding Slip, N Rod (2 req'd)	150207-01	2 (.9)

# Hollow Stem Augers

## Auger Holder

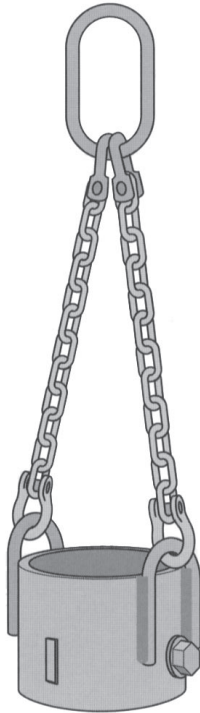


An auger holder is used to temporarily support hollow stem augers during removal of the drill string after soil sampling or monitoring well installation has been completed. Holders are used with the auger noted in parentheses. The above design is only representative. Other designs may vary.

Description	Part #	lb./kg.
<b>Auger Holder: LITE-FLITE AUGER</b>		
2-1/4" (57mm)	150419-01	10 (4.5)
<b>Auger Holder: THREADED AUGER</b>		
2-1/2" (64mm)	001332	24 (10.9)
3-3/8" (86mm) & 4" (102mm)	001335	33 (15)
6" (152mm) & 6-5/8" (168mm)	007076	30 (13.6)
<b>Auger Holder: 3-KEY/2-KEY AUGERS/OCTAGONAL</b>		
3-1/4" (83mm) & 4-1/4" (108mm)	001335	33 (15)
6-1/4" & 6-5/8" (168mm)	007076	30 (13.6)
8-1/4" (210mm)	007166	30 (13.6)
10-1/4" (260mm)	217694	50 (22.7)
12-1/4" (311mm)	150419-04	
<b>Auger Holder: J Rod JET AUGER</b>		
AWJ	001329	9 (4.1)
NWJ	001330	9 (4.1)

## Auger Hoisting Assembly

An auger hoisting assembly is used when it is required to pull hollow stem augers vertically utilizing the main hoist, as a part of the ground water monitoring or remediation well installation process.

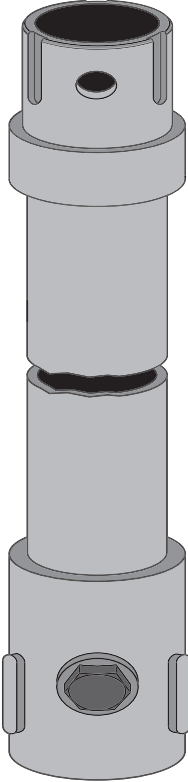


Description	Part #	lb./kg.
<b>Auger Hoisting Assembly: 3-KEY AUGERS</b>		
3-1/4" (83mm)	61030-01	21 (9.5)
4-1/4" (108mm)	61030-02	24 (10.9)
6-5/8" (168mm)	61030-03	28 (13.6)
8-1/4" (210mm)	61030-04	28 (13.6)
10-1/4" (260mm)	61030-05	59 (26.8)
12-1/4" (311mm)	61030-10	78 (35.4)

# Hollow Stem Augers

## Auger Extension

Essentially a flightless hollow stem auger, extensions are used to compensate for height of drill above ground when mounted on a truck or trailer. Sizes are identified by I.D. Meter length available.



Description	Part #	lb./kg.
<b>Auger Extension: 3-KEY</b>		
3-1/4" (83mm) x 1'6 (457mm)	150329-13	
3-1/4" (83mm) x 2'0" (610mm)	150329-01	31 (14.1)
3-1/4" (83mm) x 2'6" (762mm)	150329-02	35 (15.9)
4-1/4" (108mm) x 1'4" (406mm)	150329-08	15 (6.8)
4-1/4" (108mm) x 2'0" (610mm)	150329-09	18 (8.2)
4-1/4" (108mm) x 3'0" (914mm)	150329-11	20 (9.1)
6-5/8" (168mm) x 1'4" (406mm)	150329-07	44 (20)
6-5/8" (168mm) x 2'0" (610mm)	150329-04	52 (23.6)
6-5/8" (168mm) x 2'6" (762mm)	150329-05	56 (25.4)
6-5/8" (168mm) x 3'0" (914mm)	150329-06	64 (29)
8-1/4" (210mm) x 2'6" (762mm)	150329-15	66 (29.9)
10-1/4" (260mm) x 2'0" (610mm)	150329-19	
12-1/4" (311mm) x 2'0" (610mm)	150329-20	
<b>Auger Extensions: 2-KEY HEAVY DUTY AUGERS</b>		
3-1/4" (83mm) x 24" (610mm)	150329-23	
3-1/4" (83mm) x 30" (762mm)	150329-28	
4-1/4" (108mm) x 24" (610mm)	150329-24	
4-1/4" (108mm) x 30" (762mm)	150329-29	
6-1/4" (159mm) x 24" (610mm)	150329-25	
6-1/4" (159mm) x 30" (762mm)	150329-30	
<b>Auger Extensions: 2-KEY STANDARD AUGERS</b>		
2-1/4" (57mm) x 24" (610mm)	150329-01	
2-1/4" (57mm) x 30" (762mm)	150329-26	
3-1/4" (57mm) x 24" (610mm)	150329-22	
3-1/4" (57mm) x 30" (762mm)	150329-27	

# Extensions

## Fixed Length Extension Rod Assembly



Extension rods are essentially flightless augers. They are used to compensate for the drill base height above the ground.

Meter length available.

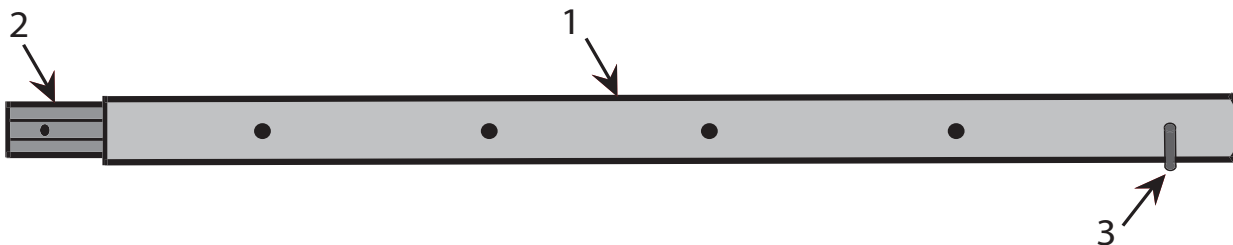
### 1-5/8" Hex

Length	Hex Size	Part #
12"	1-5/8" (41mm)	HET158-12-F
18"	1-5/8" (41mm)	HET158-18-F
24"	1-5/8" (41mm)	HET158-24-F
30"	1-5/8" (41mm)	HET158-30-F
36"	1-5/8" (41mm)	HET158-36-F
42"	1-5/8" (41mm)	HET158-42-F
48"	1-5/8" (41mm)	HET158-48-F
60"	1-5/8" (41mm)	HET158-60-F

### 2" Hex

Length	Hex Size	Part #
12"	2" (51mm)	HET2-12-F
18"	2" (51mm)	HET2-18-F
24"	2" (51mm)	HET2-24-F
30"	2" (51mm)	HET2-30-F
36"	2" (51mm)	HET2-36-F
42"	2" (51mm)	HET2-42-F
48"	2" (51mm)	HET2-48-F
60"	2" (51mm)	HET2-60-F

## Adjustable Extension Rod Assembly



### Complete Assembly

Description	Part #
13/16" (21mm) Hex	005364
1-1/8" (29mm) Hex	005365
1-5/8" (41mm) Hex	005363
2" (51mm) Hex	338620

Meter length available.

### Component Parts

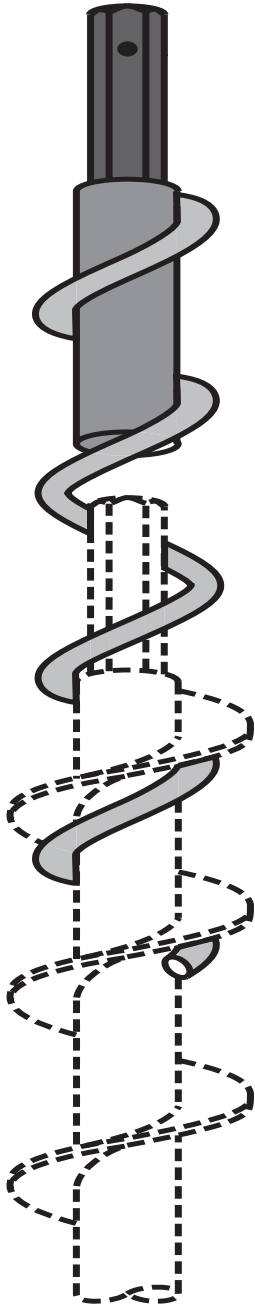
Ref	Description	Part #
1	Extension Tube - 13/16" (29mm) Hex Tube	006957
1	Extension Tube - 1-1/8" (29mm) Hex Tube	006958
1	Extension Tube - 1-5/8" (41mm) Hex Tube	006956
1	Extension Tube - 2" (51mm) Hex Tube	338619
2	Extension Rod - 13/16" (21mm) Hex	006954
2	Extension Rod - 1-1/8" (29mm) Hex	006955
2	Extension Rod - 1-5/8" (41mm) Hex	006953
2	Extension Rod - 2" (51mm) Hex	338618
3	U-Pin 13/16" (21mm) Hex	001305-I
3	U-Pin 1-1/8" (29mm) Hex	001306-I
3	U-Pin 1-5/8" (41mm) Hex	001307S-I
3	U-Pin 2" (51mm) Hex	001308-I

# Hollow Stem Augers

## Auger Retriever

An auger retriever is used to catch hold of hollow stem augers lost down the hole. Outside type retrievers achieve a firm grasp on the flights of the lost auger while inside type can be used where space is restricted. Check auger I.D. before ordering retriever.

**Hollow Stem Auger sizes are identified by auger I.D**

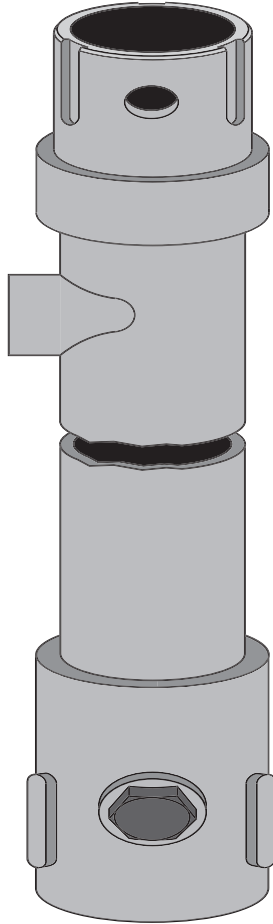


Description	Part #	lb./kg.
<b>AUGER RETRIEVER: LITE-FLITE AUGER</b>		
Outside 2-1/4" (57mm)	150418-01	15 (6.8)
Inside 2-1/4" (57mm)	150327-07	10 (4.5)
<b>AUGER RETRIEVER: 3-KEY AUGER</b>		
Outside 3-1/4" (83mm)	150418-04	85 (38.6)
Outside 4-1/4" (108mm)	150418-03	180 (81.6)
Inside Tap, LH Thread, 3-1/4" (83mm)	150327-01	33 (15)
Inside Tap, LH Thread, 6-5/8" (168mm)	150327-06	87 (39.5)
Outside, 10-1/4" (260mm)	150418-07	
Inside Tap, LH Thread, 4-1/4" (108mm)	150327-08	
Outside, 2-1/4" (57mm)	150418-01	16 (7.3)

**Consult Factory for 2-Key Standard, Heavy Duty and Octagonal Auger Retrievers**

# Hollow Stem Augers

## Wash Tee



Used for mud rotary drilling, the hollow stem auger wash tee greatly simplifies the recovery of circulation fluid. It provides a return port so that fluid used while drilling inside the hollow stem is delivered directly to the recirculation tank through the side port of the tee. Overall length is 21-1/2" (546 mm). Sizes are identified by hollow stem auger I.D.

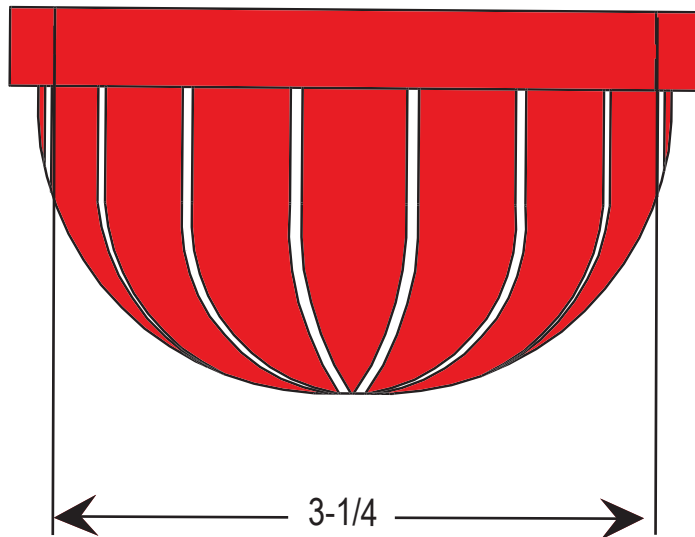
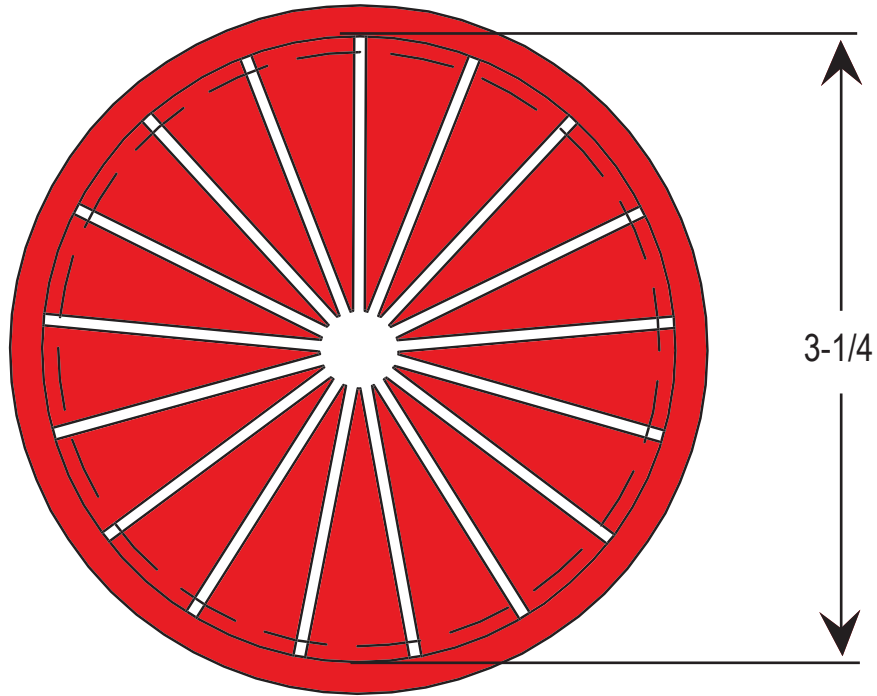
Description	Part #	lb./kg.
<b>Wash Tee: 3-Key NPT Side Port</b>		
3-1/4" (83mm), 2" (51mm)	150170-07	26 (11.8)
4-1/4" (108mm), 2" (51mm)	150170-09	28 (12.7)
6-5/8" (168mm), 3" (76mm)	15170-08	45 (20.4)
8-1/4" (210mm), 3" (76mm)	150170-10	50 (22.7)
10-1/4" (260mm), 2" (51mm)	150170-11	
10-1/4" (260mm), 3" (76mm)	150170-13	
12-1/4" (311mm), 2" (51mm)	150170-12	
12-1/4" (311mm), 3" (76mm)	150170-14	
<b>Wash Tee: 2-Key Standard Duty NPT Side Port</b>		
2-1/4" (57mm), 1/2" (28mm)	150170-16	
3-1/4" (83mm), 2" (51mm)	150170-17	
4-1/4" (108mm), 2" (51mm)	150170-18	
6-1/4" (159mm), 3" (76mm)	150170-19	
<b>Wash Tee: Threaded NPT Side Port</b>		
2-1/2" (64mm), 2" (51mm)	150170-02	19 (8.6)
3-3/8" (86mm), 2" (51mm)	150170-03	27 (12.2)
4" (102mm), 2" (51mm)	150170-04	30 (13.6)
6" (152mm), 3" (76mm)	150170-06	42 (19.1)

**Consult Factory for Other Sizes**

# Flex Plugs

Order Flex Plugs by Hollow Stem Auger I.D.

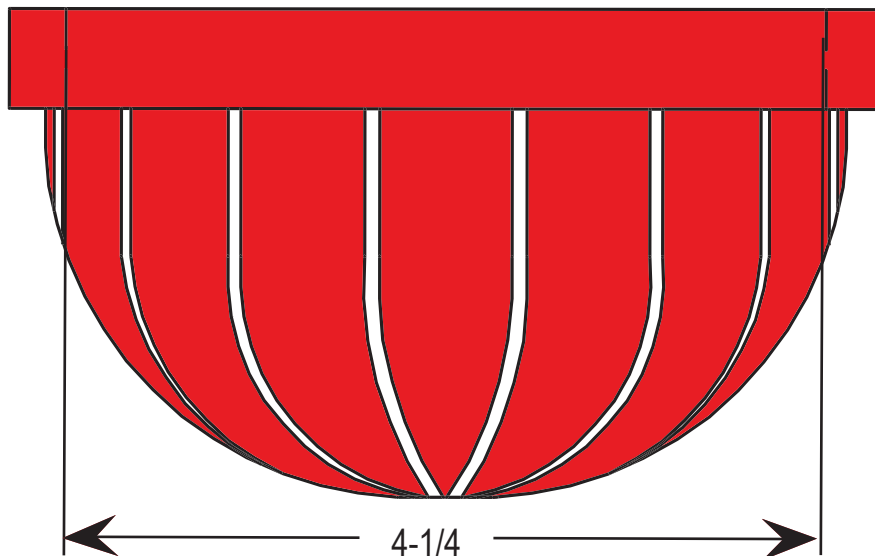
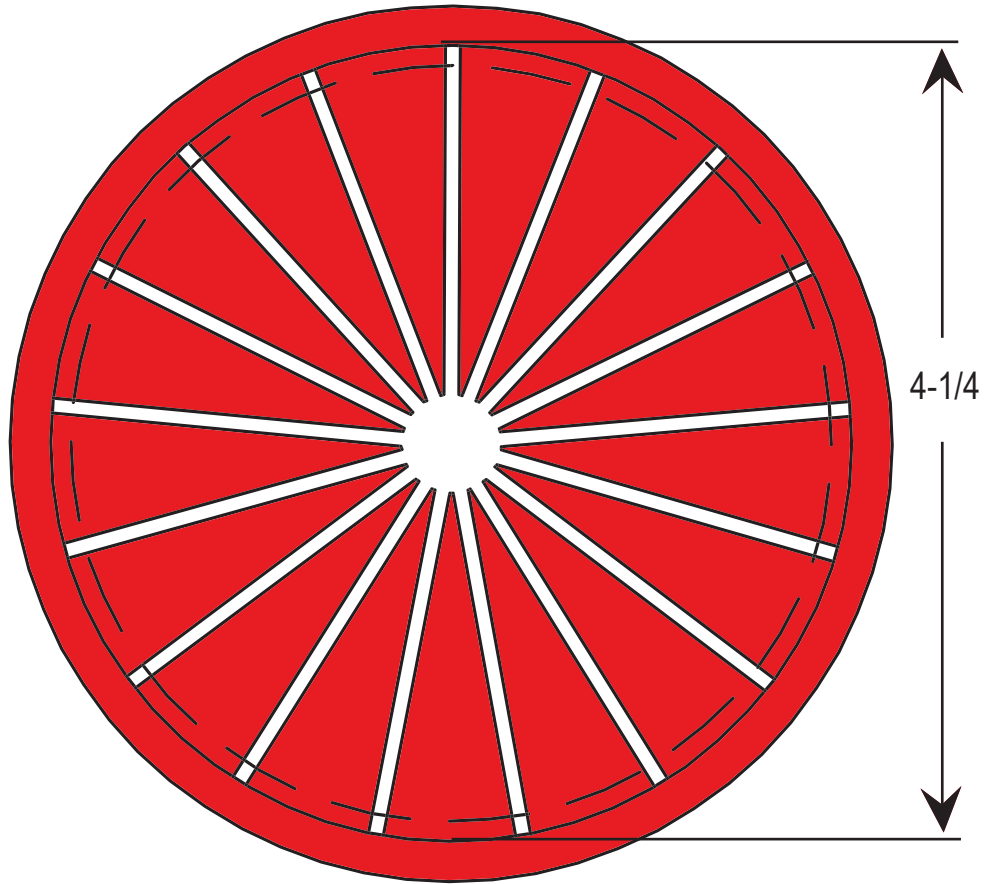
**PB3-1/4-I**



# Flex Plugs

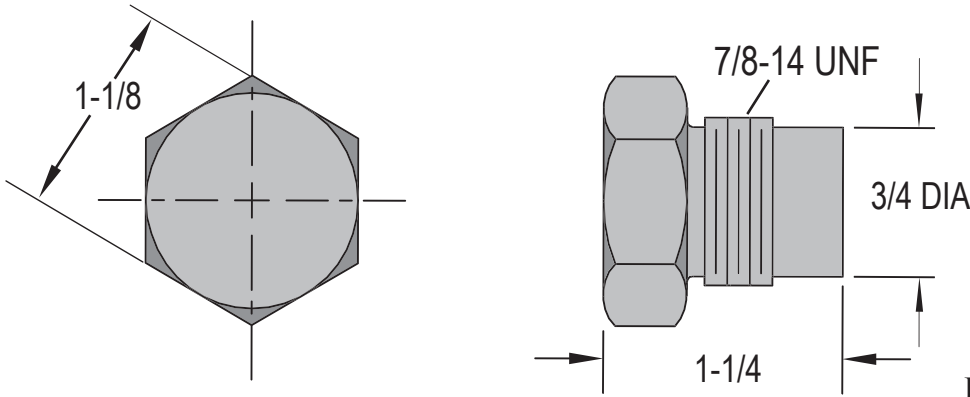
Order Flex Plugs by Hollow Stem Auger I.D.

**PB4-1/4-I**





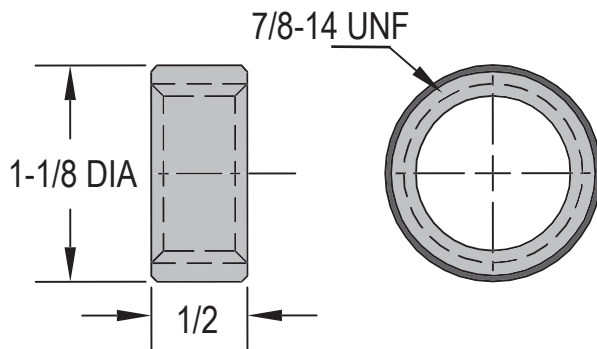
# Auger Bolts/Threaded Inserts



## 21025-I

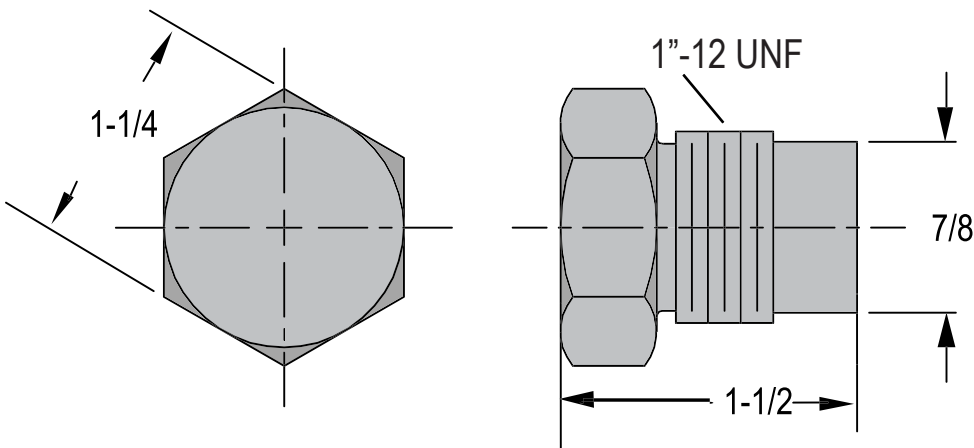
Direct replacement for:  
 2 Key Standard-2-1/4" thru 6 1/4"  
 Acker- 3-1/4", 4-1/4"  
 Diedrich 2-1/4" thru 6-1/4"  
 Octagonal - 3-1/4 & 4-1/4

Hard Faced Available - 21025HF-I



## 21068-I

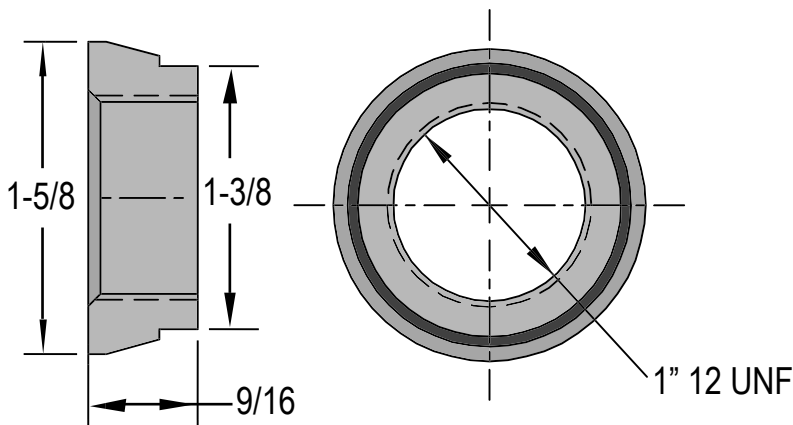
2 Key Standard-2-1/4" thru 6 1/4"  
 Acker- 3-1/4", 4-1/4"  
 Diedrich 2-1/4" thru 6-1/4"  
 Octagonal - 3-1/4 & 4-1/4



## 21913-I

Direct replacement for:  
 2 Key Heavy Duty  
 3-1/4", 4-1/4"

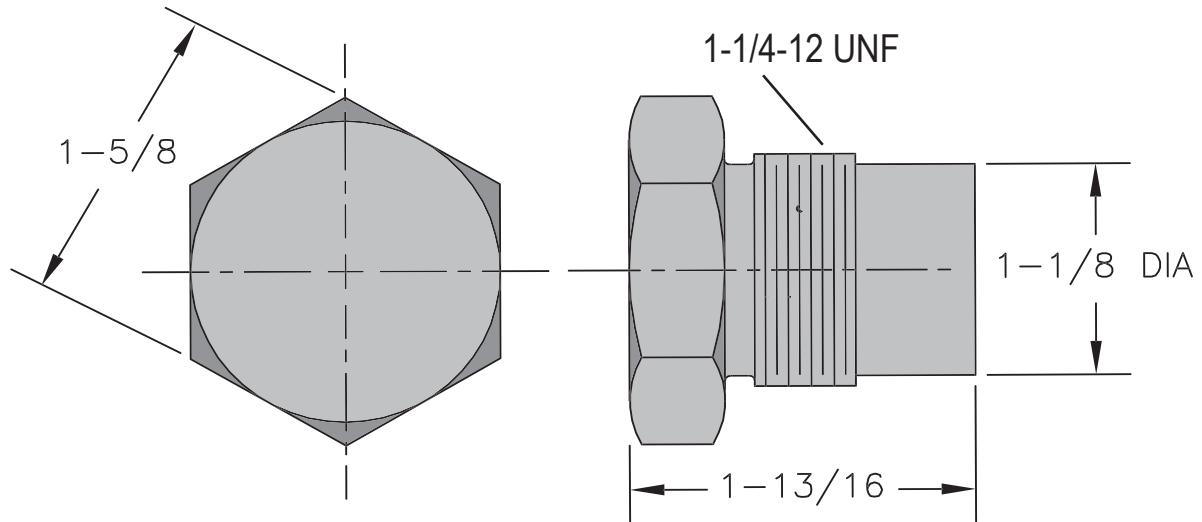
Hard Faced Available - 21913HF-I



## 21915-I

2 Key Heavy Duty Auger

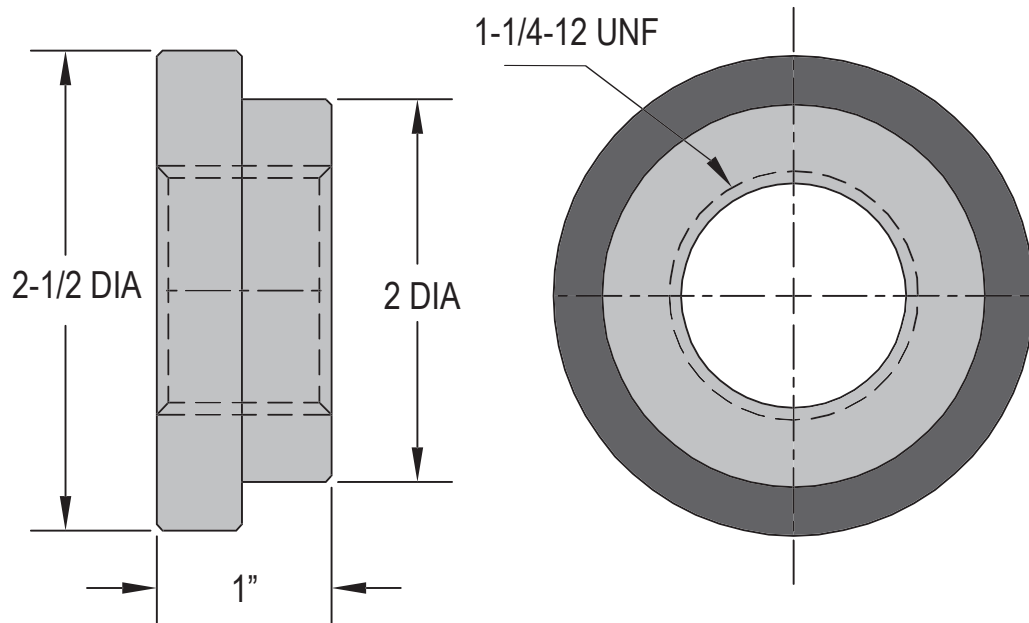
# Auger Bolts/Threaded Inserts



**22590-I**

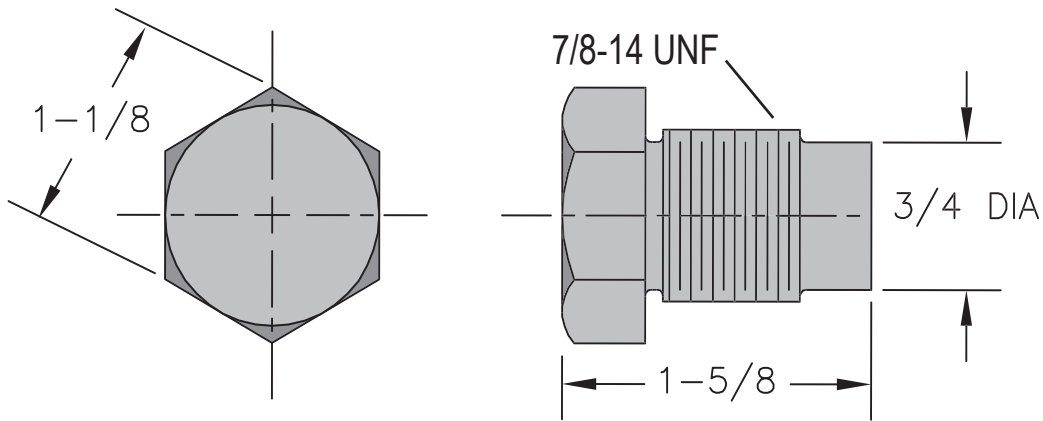
**2 Key Extra Heavy Duty**

**CME -12-1/4 XHD**



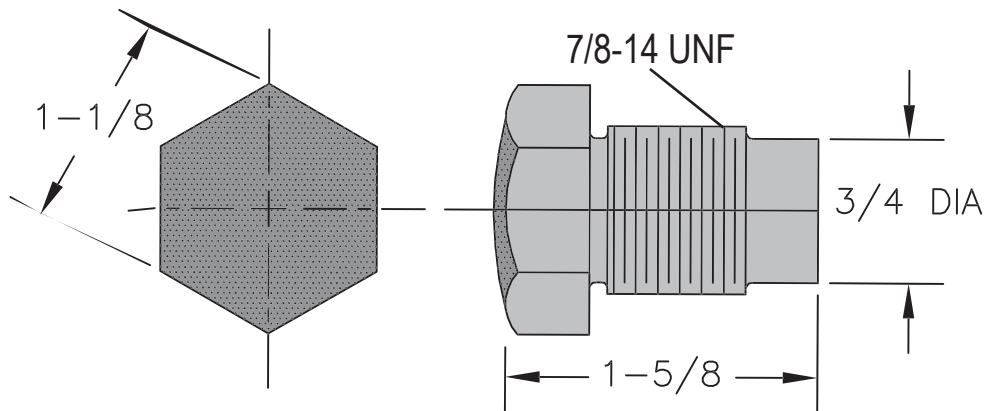
**22591-I**

# Auger Bolts/Threaded Inserts



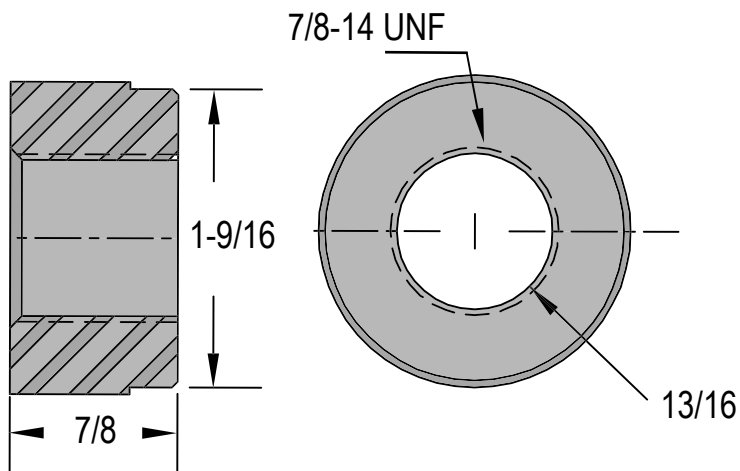
**217136-I**

Direct replacement for:  
3 Key-  $3-1/4$ " thru  $8-1/4$ "



**150307-I**

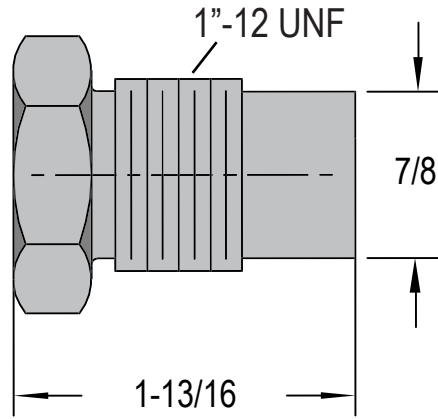
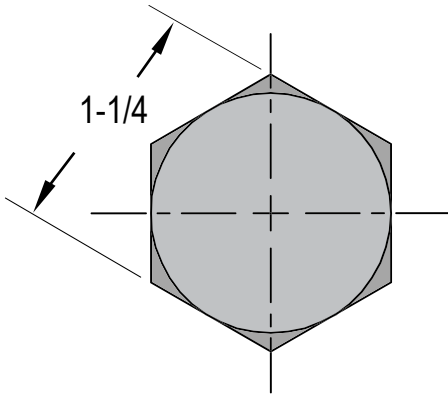
Direct replacement for:  
3 Key-  $3-1/4$ " thru  $8-1/4$ "  
Same as 217136-I with  
Hard Facing



**150477-I**

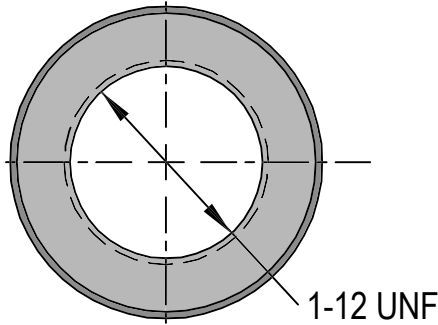
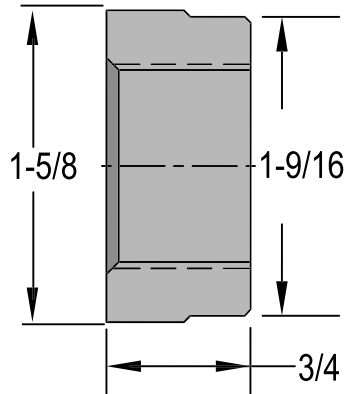
3 Key-  $3-1/4$ " thru  $8-1/4$ "

# Auger Bolts/Threaded Inserts



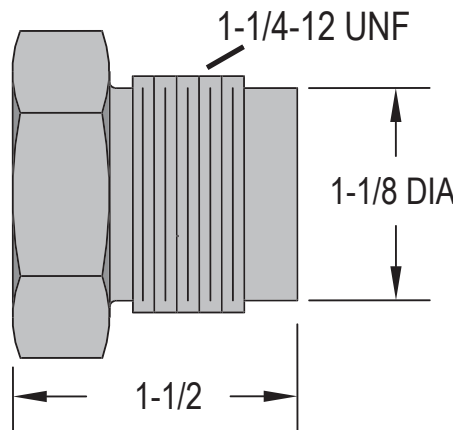
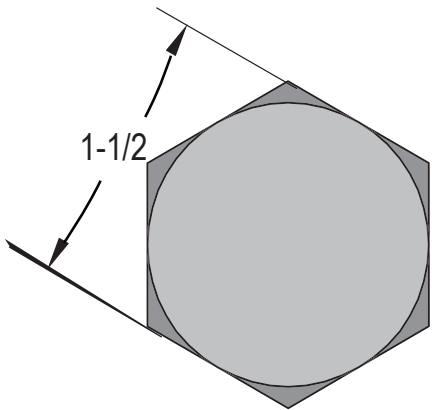
**150666-I**  
Hard Faced Available - 150666HF-I

Direct replacement for:  
3-Key 10-1/4" & 12-1/4"



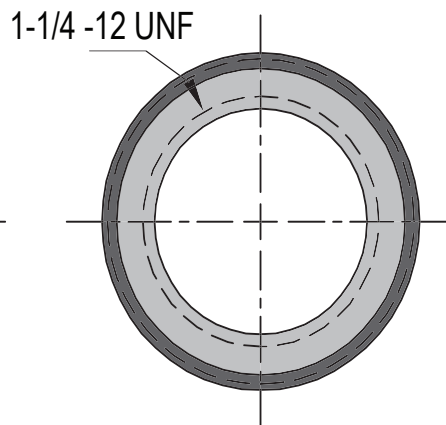
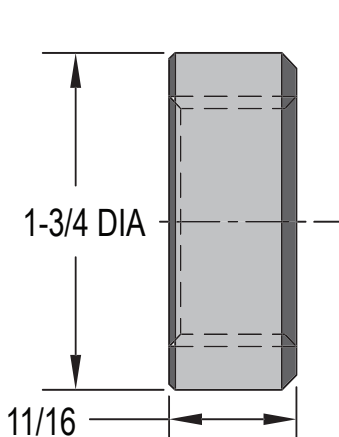
**150665-I**

3-Key 10-1/4" & 12-1/4"



**130660-I**

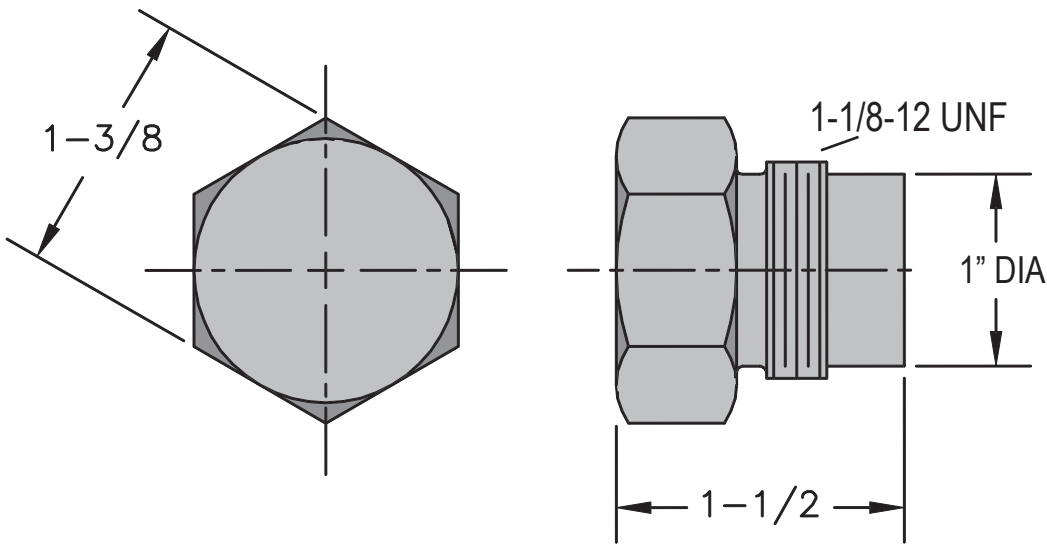
Direct replacement for:  
Acker 9-1/4" & 12-1/4"



**161273-2-I**

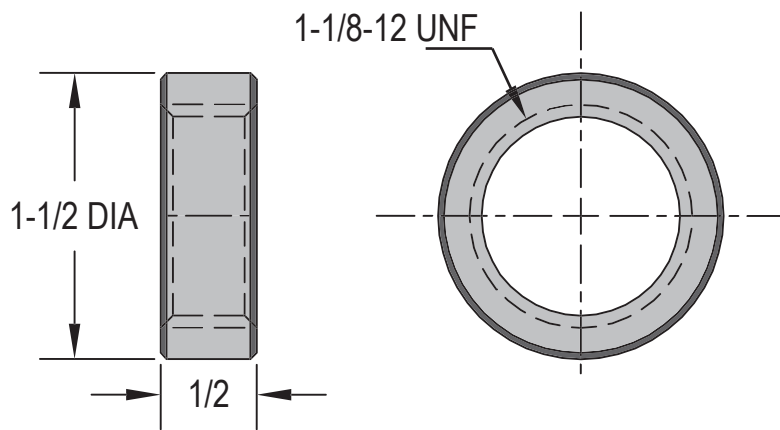
Acker 9-1/4" & 12-1/4"

# Auger Bolts/Threaded Inserts



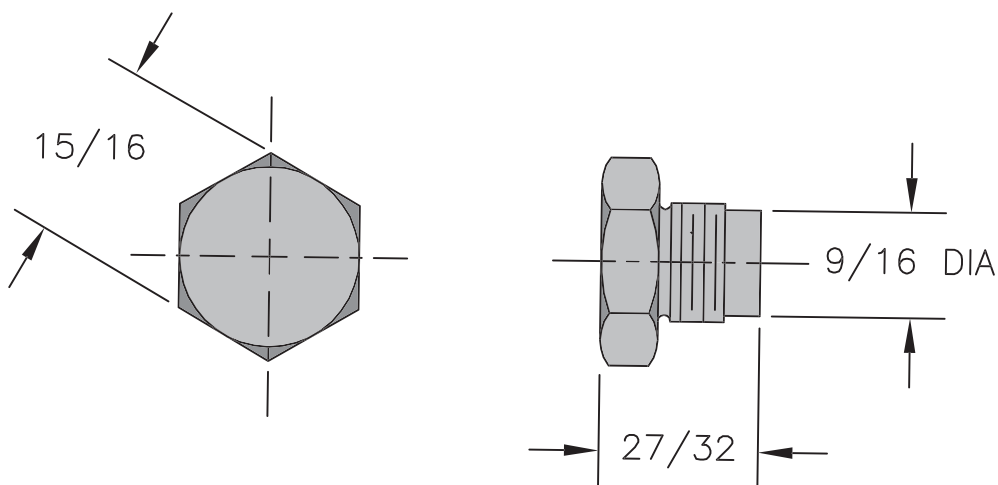
**Q427-I**

Direct replacement for:  
Diedrich  $9\text{--}1/4\text{''}$  &  $12\text{--}1/4\text{''}$



**Q248-I**

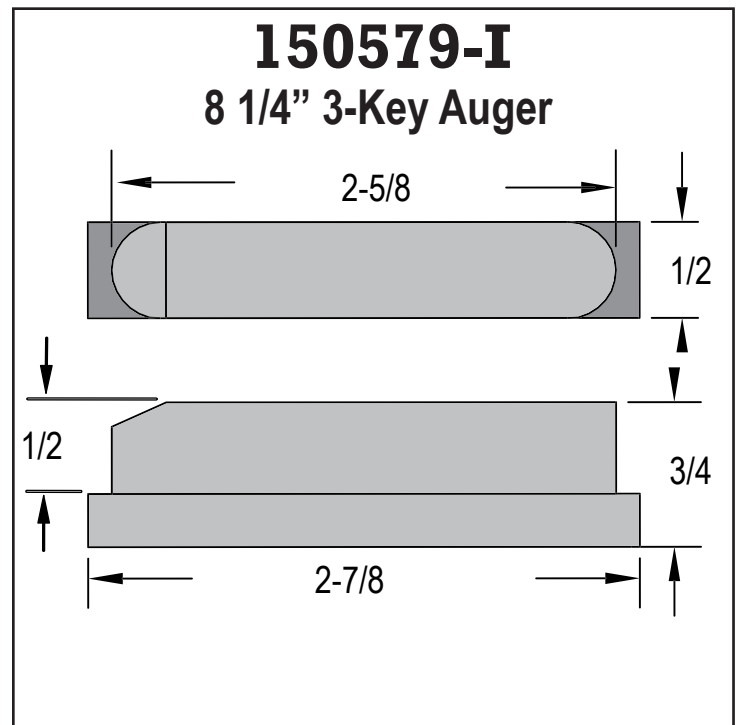
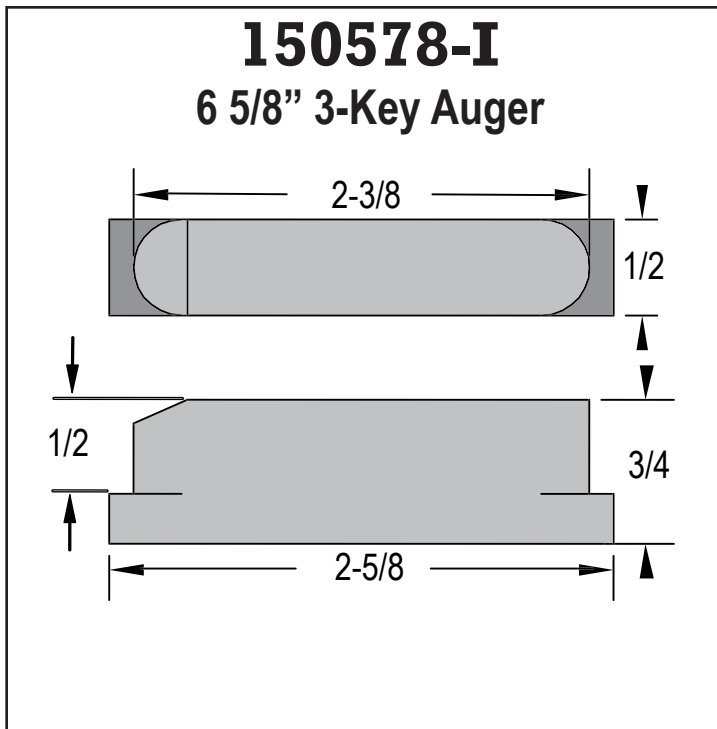
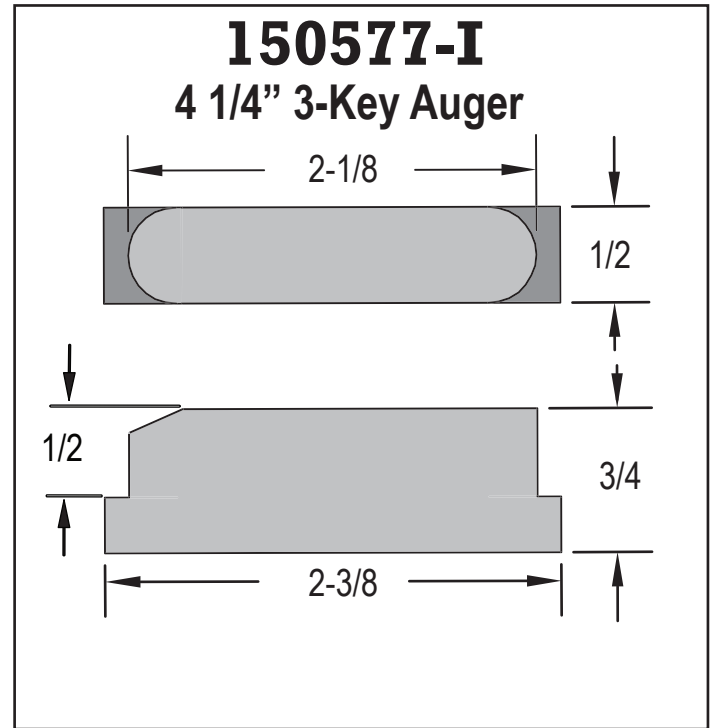
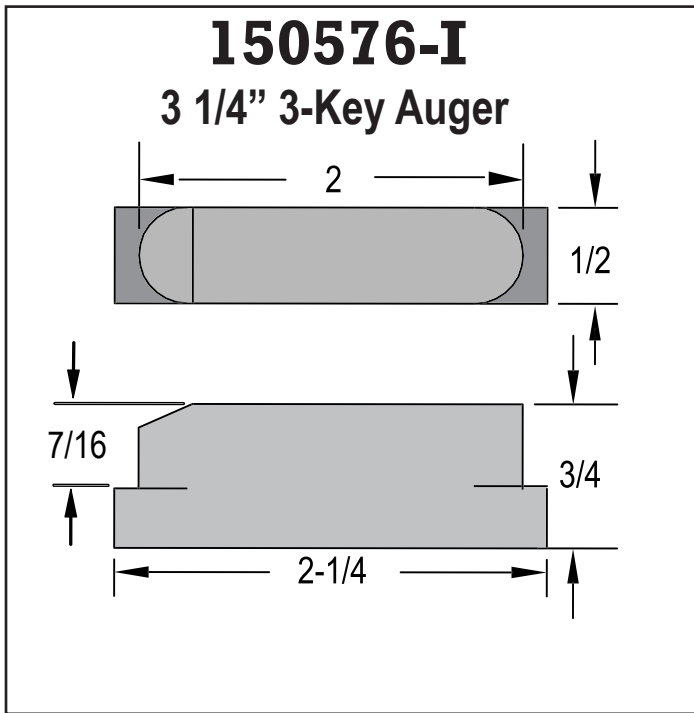
Diedrich  $9\text{--}1/4\text{''}$  &  $12\text{--}1/4\text{''}$



**217135-I**

Direct replacement for:  
 $2\text{--}1/4\text{''}$  Lite-Flite Hollow Stem

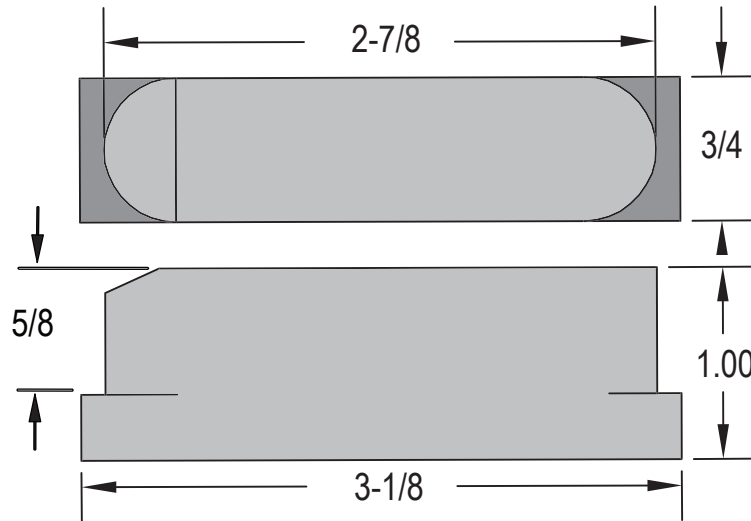
# Auger Key - 3 Key Augers



# Auger Key - 3 Key Augers

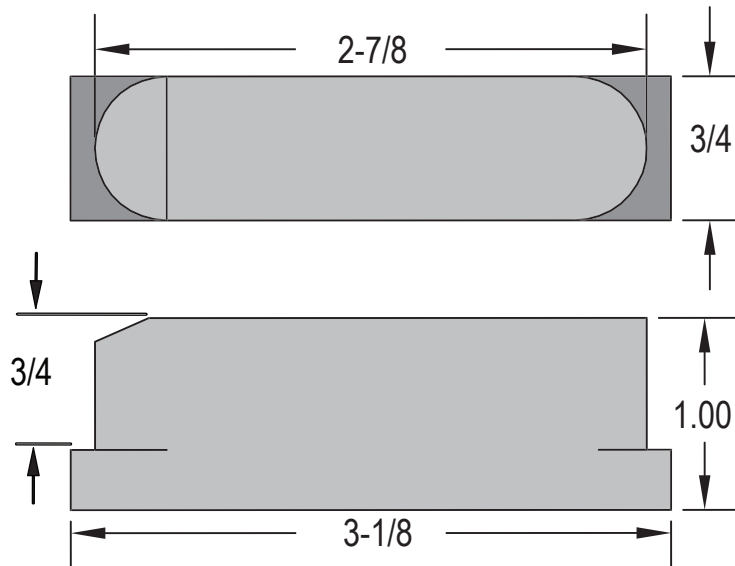
**150614-I**

**10 1/4" 3-Key Auger**



**150642-I**

**12 1/4" 3-Key Auger**



# Auger Key - 2 Key Augers

